

Medical Office Condo For Sale

# Midway Medical Center

3108 Midway Road, Plano, TX 75093



Tor Erickson  
Senior Vice President  
terickson@cresa.com  
469.323.5395

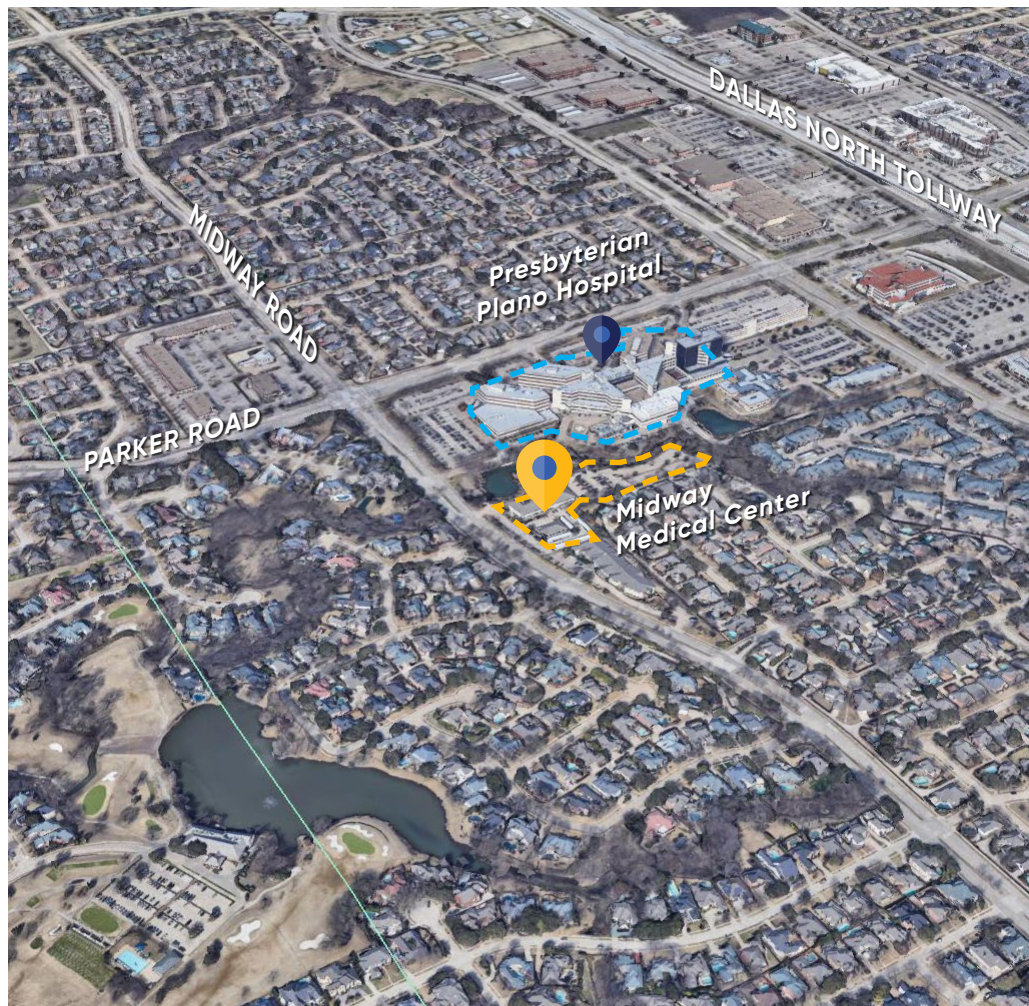
cresa



The Offering

# 3108 Midway Road, Suite 102

Plano, TX 75093



cresa



## Property Details Site Profile

TYPE	Medical Office Condo
SIZE	3,712 RSF (within 43,542 SF property)
PRICE	\$1,300,000
SUBMARKET	Upper Tollway/West Plano
YEAR BUILT	2005
PARKING	5/1,000 SF
COUNTY	Collin County
FEATURES	<ul style="list-style-type: none"><li>• Building Lobby Exposure</li><li>• Flexible Layout Conducive for 1-2 Practices</li><li>• Direct Access to Presbyterian Plano Hospital</li><li>• 4 Reserved Carports</li><li>• Abundant Patient Parking (5/1,000 SF)</li><li>• Professionally-Managed Building</li><li>• Quick Access to DNT, SH-190 and SH-121</li></ul>

## Contact



**Tor Erickson**  
Senior Vice President  
terickson@cresa.com  
469.323.5395



## Photos



## Contact

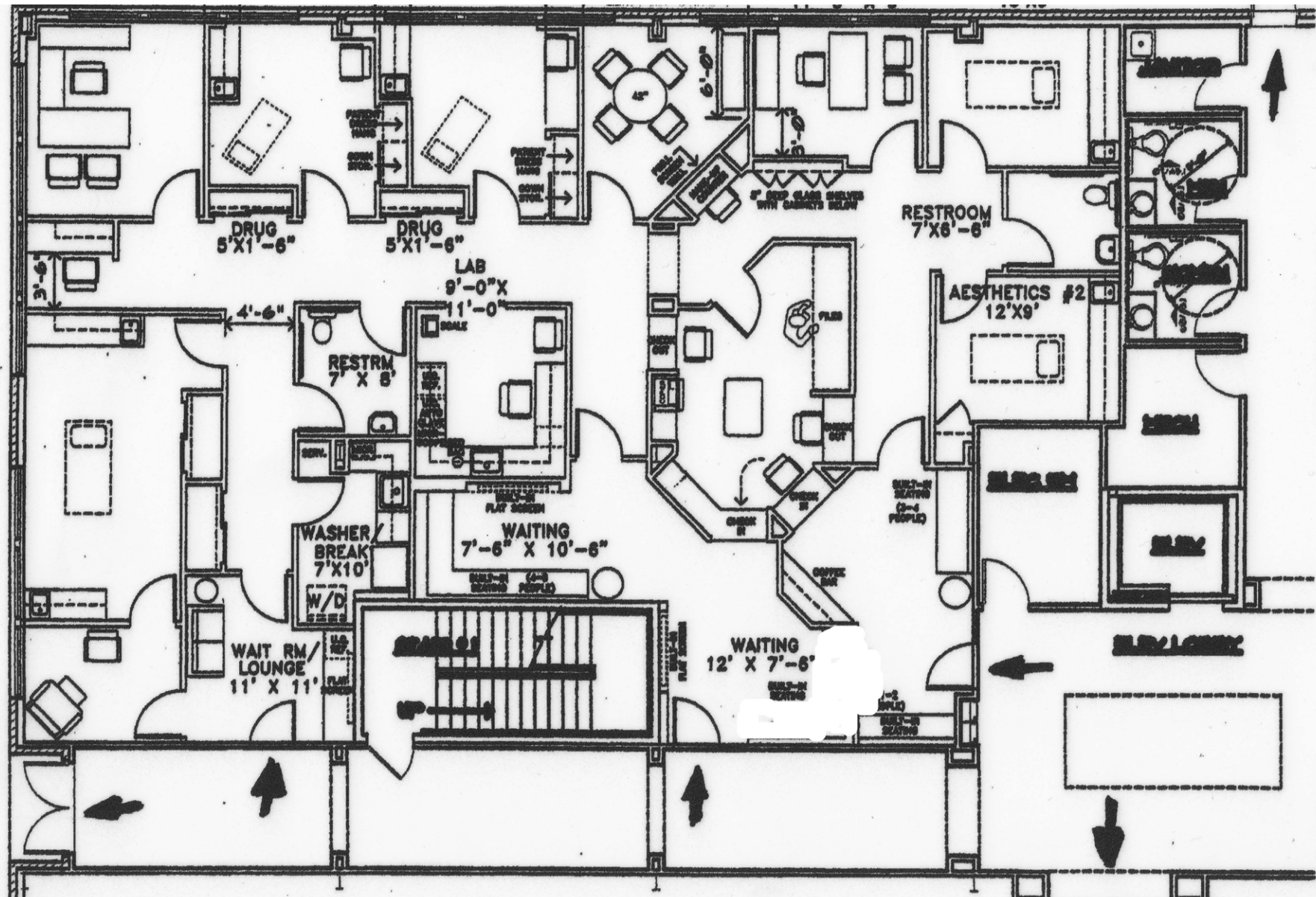


**Tor Erickson**  
Senior Vice President  
terickson@cresa.com  
469.323.5395

**cresa**



## Floor Plan



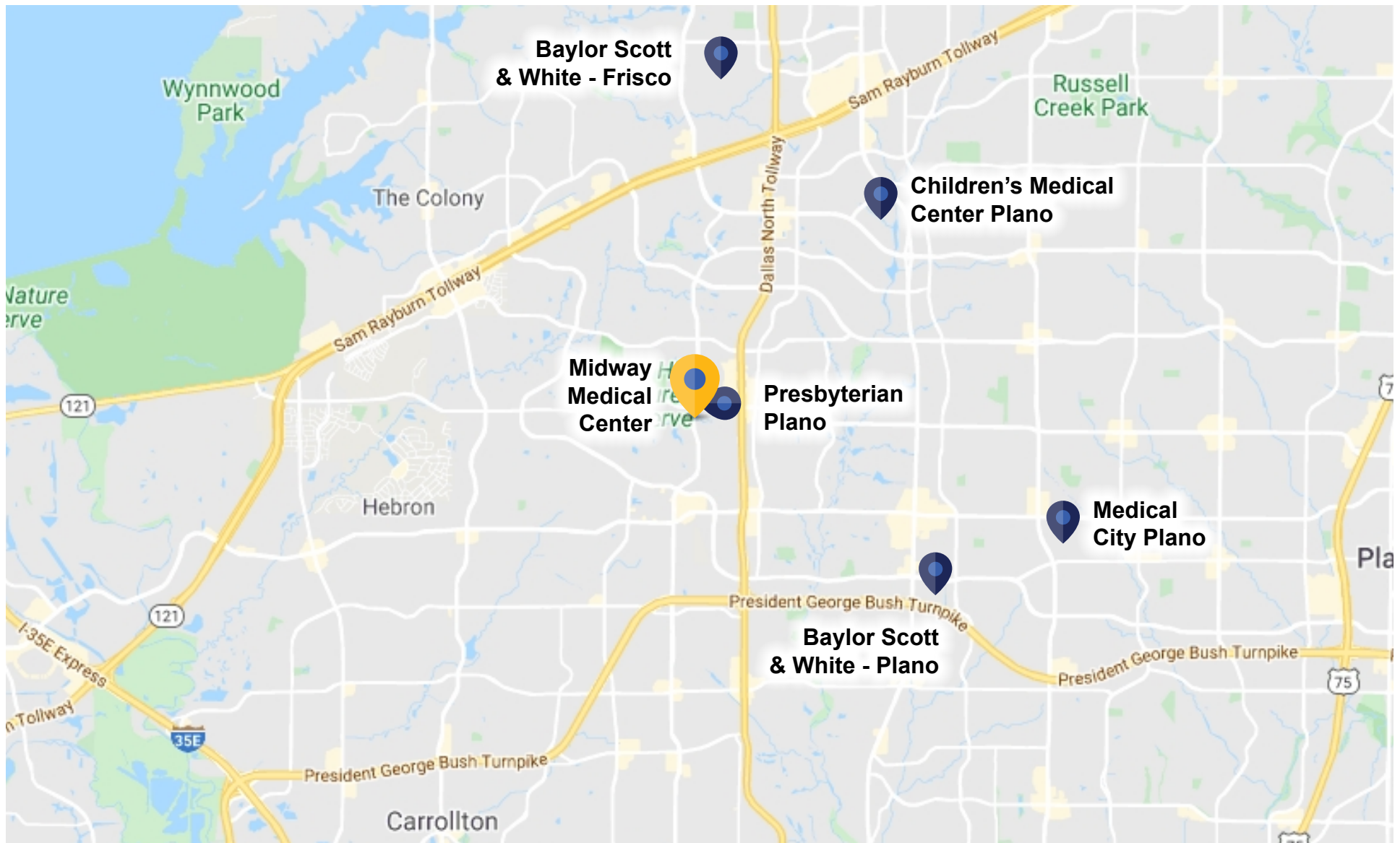
## Contact



**Tor Erickson**  
Senior Vice President  
terickson@cresa.com  
469.323.5395

**cresa**

## Area Map



## Contact



**Tor Erickson**  
Senior Vice President  
terickson@cresa.com  
469.323.5395