

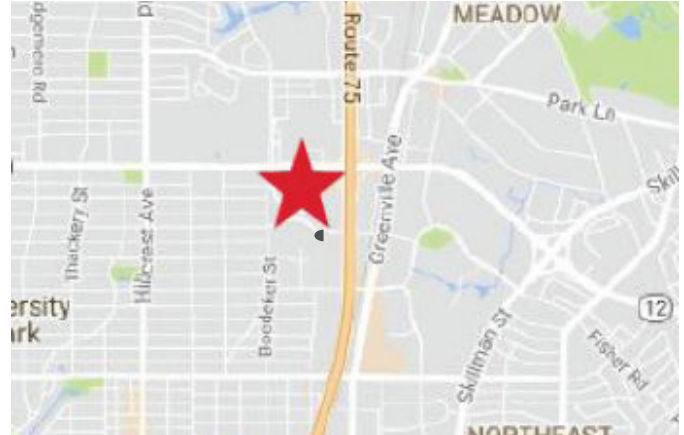
Sublease Available

One Lincoln Park
8401 N Central Expressway,
Suite 480
Dallas, TX 75225

Space Profile

RSF	5,650 SF
Rental Rate	\$29.50/SF + electric
Term	Until September 30, 2022
Building Class	A
Built	1999
Parking	20 parking spaces
Suite Information	8 Private Offices Conference Room Brand New Finishes

Map



Property Features

- LEED Certified - Gold
- Underground Parking
- Fitness Center, Deli, and Property Manager on-site

For More Information

Cresa
5005 LBJ Fwy.,
Suite 810
Dallas, TX 75244
cresa.com/dallas

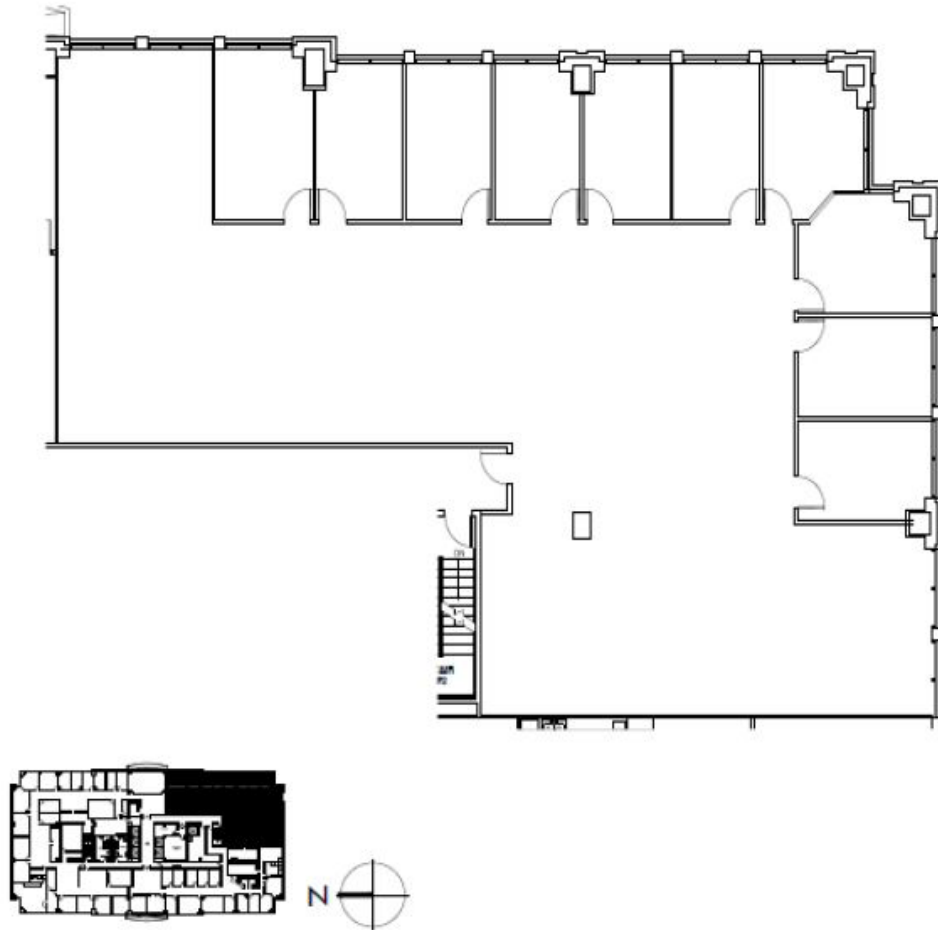


Jay Neikirk
214.306.6494 direct
jneikirk@cresa.com



One Lincoln Park
8401 N Central Expressway,
Suite 480
Dallas, TX 75225

Suite 480 - 5,650 SF



Interior Photos

