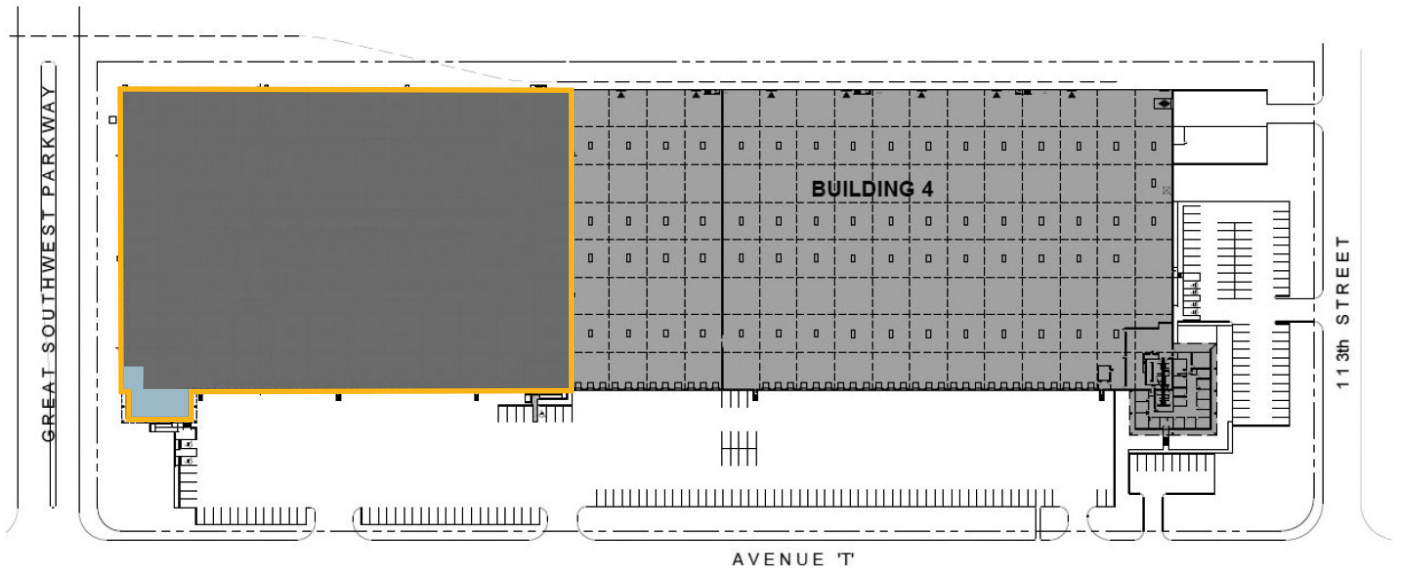


1211 Avenue T  
Grand Prairie, TX 75050

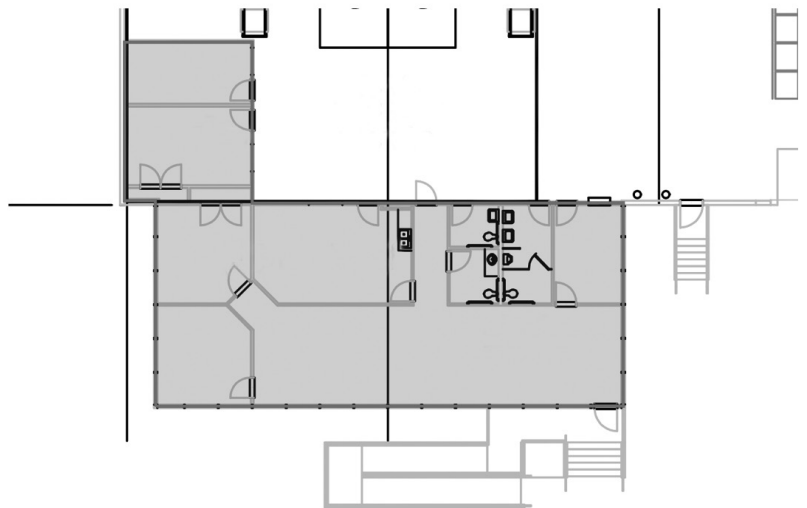
Industrial Sublease  
Available



#### SUBLEASE INFORMATION

1211 Avenue T  
Grand Prairie, TX 75050

- ±156,220 SF Available
- Term Expires: 12/31/2027
- Rate: Contact Broker
- Clear Height: 30'
- Dock Doors: 22 Dock High  
Dock Packages: 20 (lights, fans,  
locks, seals, pit levelers)
- 1 Oversized Ramp
- ESFR Sprinkler System
- 5 HVLS Fans
- Car Parks: 50
- Office Area: ±2,614 SF  
plus Separate Breakroom



OFFICE DETAIL

#### For More Information

**Jake McMillon**  
325.669.2960  
jmcmillon@cresa.com

**Jim Hazard, SIOR**  
214.394.3626  
jhazard@cresa.com

**Cresa**  
One Cowboys Way, 350  
Frisco, TX 75034

Even though obtained from sources deemed reliable, no warranty or representation, express or implied, is made as to the accuracy of the information herein, and it is subject to errors, omissions, change of price, rental or other conditions, withdrawal without notice, and to any special listing conditions imposed by our principals.

**cresa**

