



# Sublease Available

\*10% broker bonus for a Sublease Signed by October 1\*

**1801 N Lamar  
Suite 400  
Dallas, TX 75202**

## Space Profile

<b>Premises</b>	Suite 400
<b>RSF</b>	5,662 RSF
<b>Rental Rate</b>	\$14.00/SF NNN
<b>Term</b>	Through February 28, 2020
<b>Building Class</b>	B
<b>Submarket</b>	Dallas CBD
<b>Built</b>	1913, Renovated 2016
<b>Parking</b>	2 covered, reserved spaces - Adjacent surface parking lot

## Map



## Features

- Creative space with unique lighting, exposed brick, concrete, wood and metal details
- Numerous restaurants within walking distance
- Adjacent to Amerisuites Hotel
- Easy access from Woodall Rodgers Freeway, I-35E and Highway 75
- 0.2 miles from West End DART Transit Stop

## For More Information

**Cresa**  
5005 LBJ Fwy.,  
Suite 810  
Dallas, TX 75244  
[cresa.com/dallas](http://cresa.com/dallas)



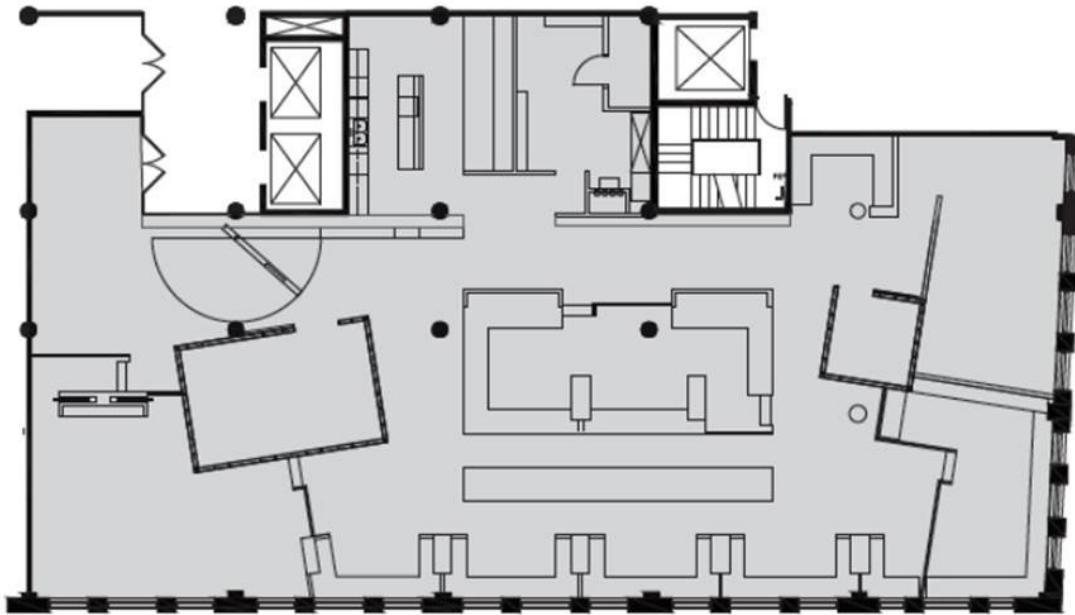
**Maschera Usrey**  
214.306.6492  
[musrey@cresa.com](mailto:musrey@cresa.com)



**Scott Bumpas**  
214.30636495  
[sbumpas@cresa.com](mailto:sbumpas@cresa.com)



4th Floor - 5,662 SF



Interior Photos





**1801 N Lamar  
Suite 400  
Dallas, TX 75202**

**4th Floor - 5,662 SF**



**10% broker  
bonus for  
a Sublease  
Signed by  
October 1**



**For More Information**

**Maschera Usrey**  
214.306.6492  
[musrey@cresa.com](mailto:musrey@cresa.com)

**Scott Bumpas**  
214.306.6495  
[sbumpas@cresa.com](mailto:sbumpas@cresa.com)