

Value Sublease Available at Below Market Rates

1333 Corporate Drive

Irving, TX 75038

Corporate Park Place

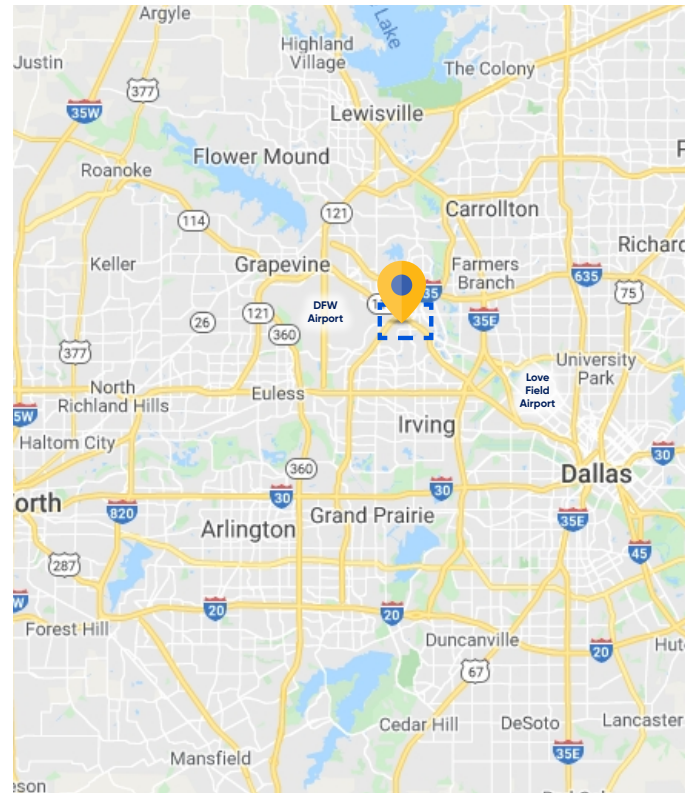


Alex Coe
Principal
acoe@cresa.com
214.789.0215

cresa 

Corporate Park Place
1333 Corporate Drive
Irving, TX 75038

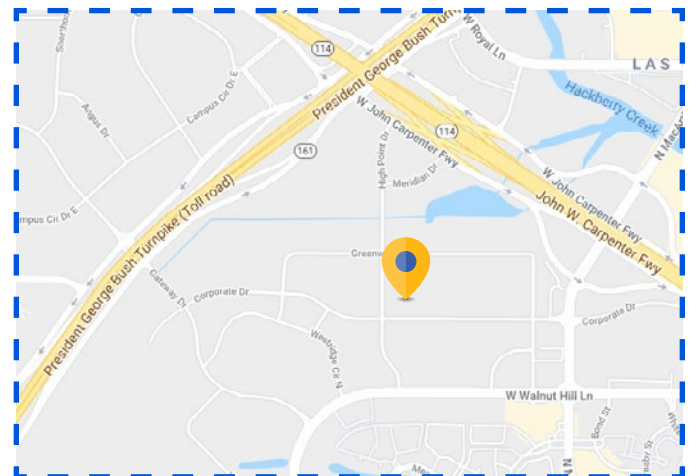
Value Sublease
Available at Below
Market Rates



Premises	Suite 235
Size	5,680 SF
Rental Rate	\$16.00/SF + Electric
Availability	Immediate
Term	Through July 31, 2023
Submarket	Office Center
Building Class	B

Space / Building Features

- 45 Automated Sit-Stand Desks throughout Bullpen / Cubicles
- Furniture Negotiable
- 4 Private Offices
- Storage Room
- Break Room / Kitchen
- Nearby Restaurants & Hotels
- On-Site Professional Management and Leasing
- After-hours Controlled Access
- Full Service Deli
- Foodsby Catering Service Available
- Conference room rental available
- 7.5 Miles from DFW Airport / 11.5 Miles from Love Field
- Easy Access to John Carpenter Freeway, LBJ Freeway and State Highway 161



Contact



Alex Coe
Principal
acoe@cresa.com
214.789.0215

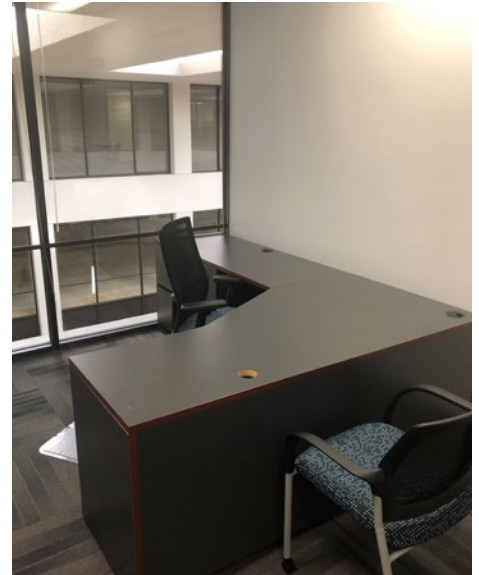




Corporate Park Place
1333 Corporate Drive
Irving, TX 75038

Suite 235 - 5,680 SF

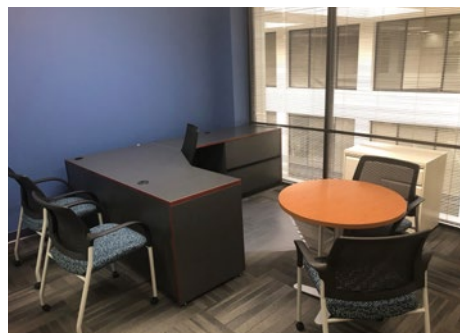
Interior Photos



Contact

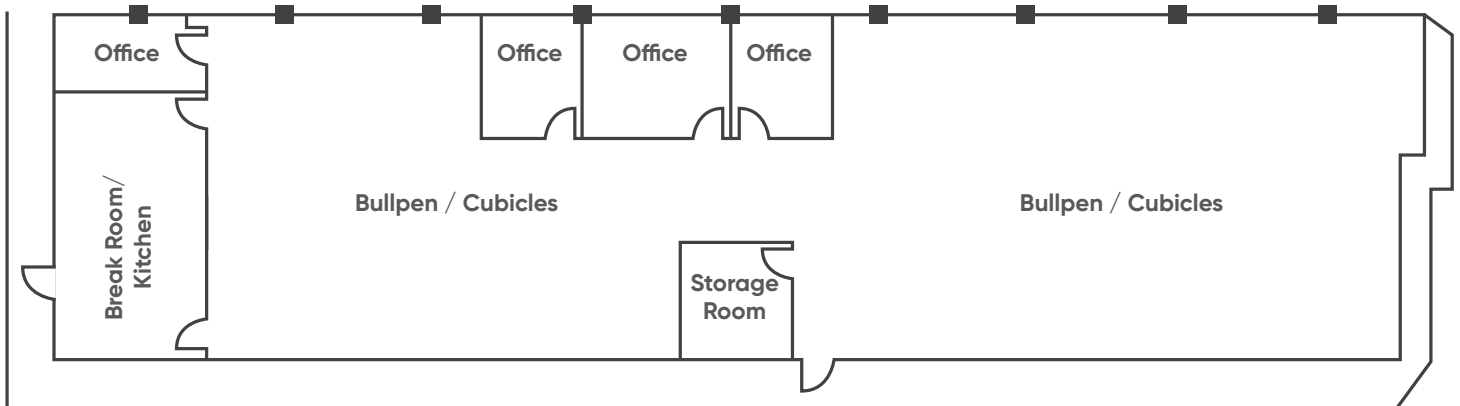


Alex Coe
Principal
acoe@cresa.com
214.789.0215



Suite 235 - 5,680 SF

Floorplan*



*Plan does not accurately depict furniture layout

Space / Features

- 45 Automated Sit-Stand Desks throughout Bullpen / Cubicles
- Furniture Negotiable
- 4 Private Offices
- Storage Room
- Break Room / Kitchen

Even though obtained from sources deemed reliable, no warranty or representation, express or implied, is made as to the accuracy of the information herein, and it is subject to errors, omissions, change of price, rental or other conditions, withdrawal without notice, and to any special listing conditions imposed by our principals.

Contact



Alex Coe
Principal
acoe@cresa.com
214.789.0215

