

# Sublease

## Award-Winning, Flexible Sublease With City Views, Ideal for Coworking

444 N Michigan Ave  
Chicago, IL 60611

### Space Profile:

<b>Premises</b>	31st Floor
<b>RSF</b>	8,326 RSF (Divisible)
<b>Rental Rate</b>	Negotiable
<b>Availability</b>	30 Days
<b>Term</b>	Thru 7/31/27
<b>Building Class</b>	A
<b>Submarket</b>	North Michigan Ave/ Streeterville



### Contact:



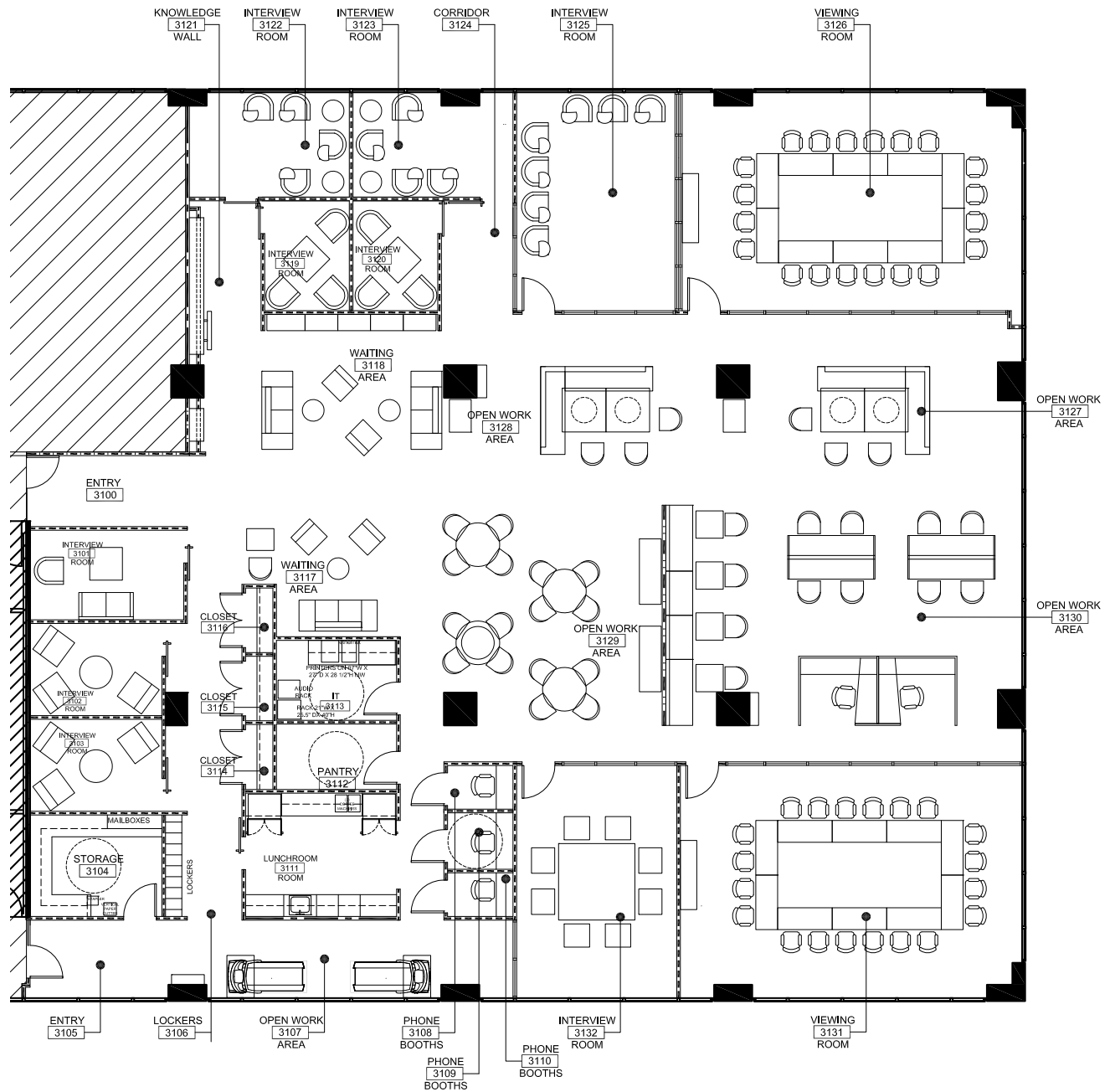
**Julie Lane**  
312.420.6584  
jlane@cresa.com

### Features/Amenities:

- Conferencing Facility
- Award-winning restaurant on site
- Gym
- Property Manager on Site
- Tenant lounge
- Proximity to public transit and parking facility

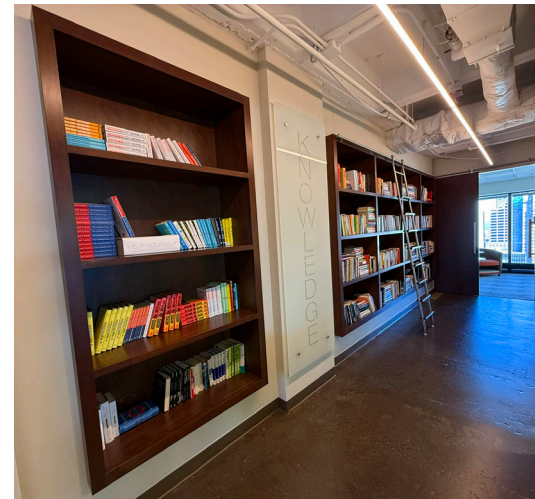
# 444 N Michigan Ave

Chicago, IL 60611





## 444 N Michigan Ave Chicago, IL 60611



**cresa** . . .

Cresa © 2024. All rights reserved. The information contained in this document has been obtained from sources believed reliable. While Cresa does not doubt its accuracy, Cresa has not verified it and makes no guarantee, warranty, or representation about it. It is your responsibility to independently confirm its accuracy and completeness. Any projections, opinions, assumptions or estimates used are for example only and do not represent the current or future performance of the property. The value of this transaction to you depends on tax and other factors which should be evaluated by your tax, financial and legal advisors. You and your advisors should conduct a careful, independent investigation of the property to determine to your satisfaction the suitability of the property for your needs.