

BUILDING FOR SALE

1500 Touhy Avenue

Elk Grove, IL

91,517 SF | WAREHOUSE BUILDING | FOR SALE

INDUSTRIAL BUILDING FOR SALE

1500 Touhy Avenue
Elk Grove, IL



Parcels

Chase Avenue
08-27-402-064
08-27-402-063

Touhy Avenue
08-27-402-012
08-27-402-022

- **Fire protection:** 100 % wet sprinkler coverage (including offices).
- **Yard fully fenced:** with 100% concrete apron coverage and one guard station with a manual gate.
- **Durable construction:** featuring a steel frame structure with concrete block walls, enhanced by brick veneer and metal panel exterior finishes.
- **Prime location:** Elk Grove is strategically located near O'Hare Airport and major highways, making logistics and last-mile delivery operations especially appealing.

BUILDING PROFILE

Building Type	Warehouse	Year Built	1970
Lot Size	7.5 Acres (4 Parcels)	Clear Height	20' to main joist 22' to ceiling deck
Zoning	I-2 (Heavy Industrial)	Docks	9 docks 11 drive-in doors
Building Size	91,517 SF	Fleet Service Area	3 Bay; 3,500 SF
Office Size	Approx. 7,900 SF	Submarket	Elk Grove/O'Hare

For More Information



Adam Ratajski
630.217.2323
aratajski@cresa.com



Jeff Counsell
312.589.8844
jcounsell@cresa.com

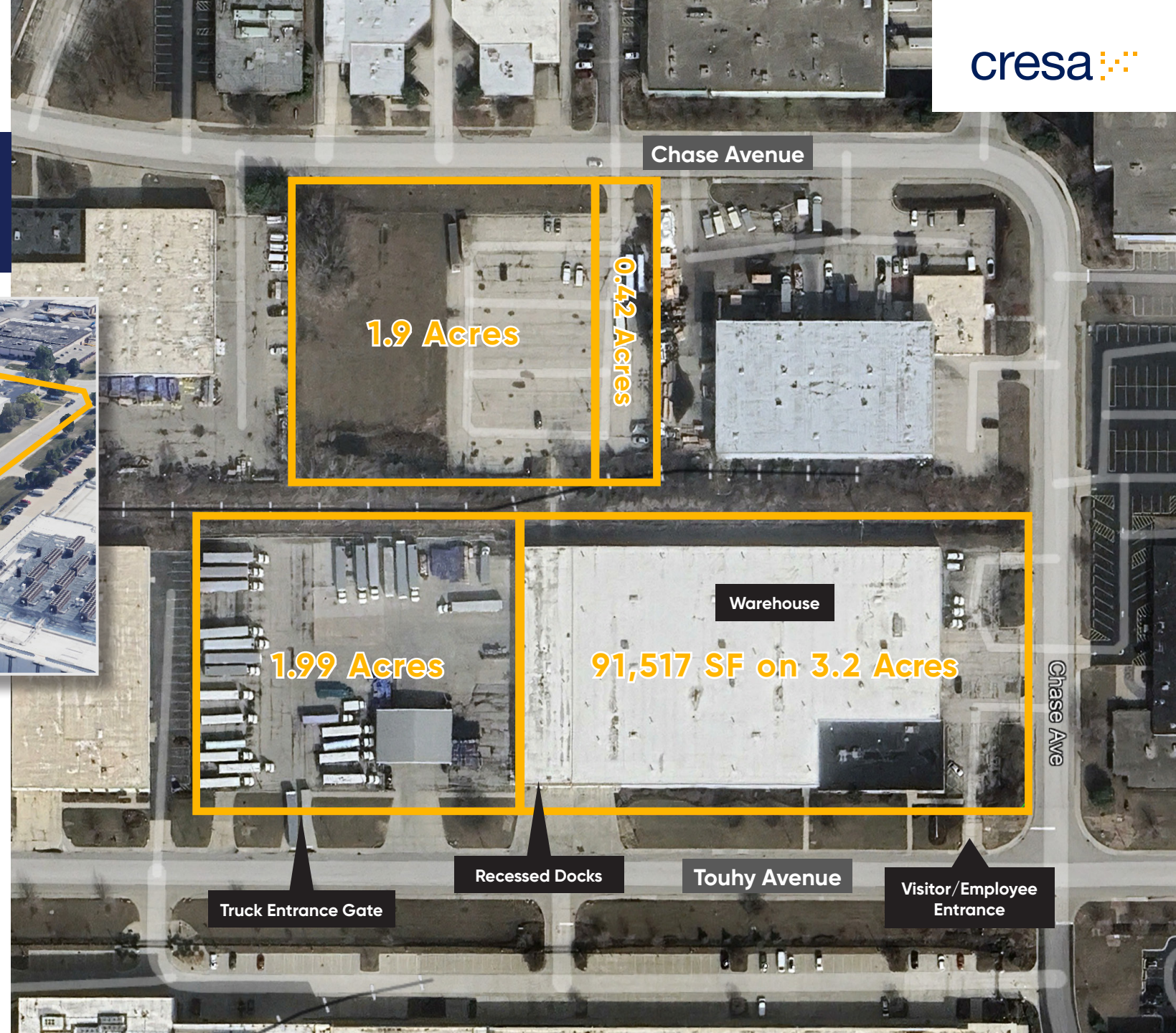
INDUSTRIAL BUILDING FOR SALE

1500 Touhy Avenue

Elk Grove, IL



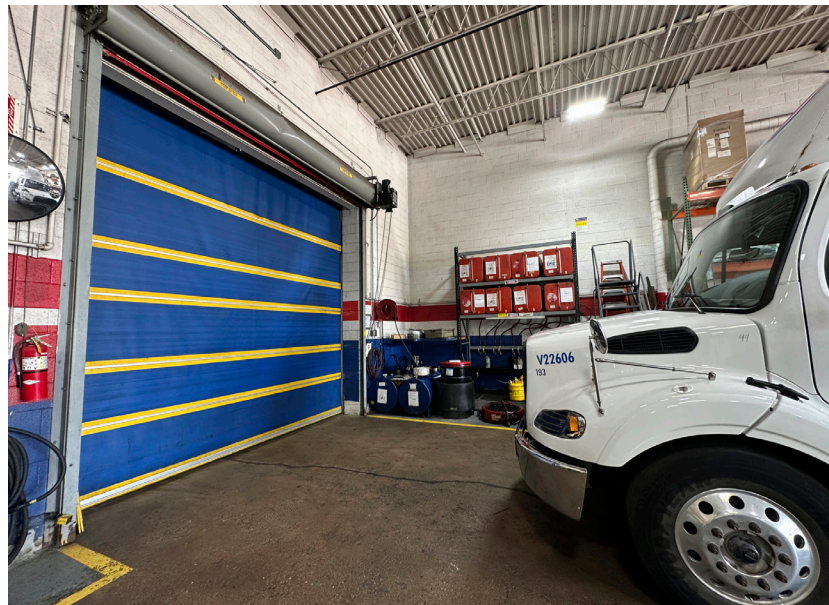
Of the 7.5 acres offered, 2.3 acres feature a secured, fully fenced lot.



INDUSTRIAL BUILDING FOR SALE

1500 Touhy Avenue

Elk Grove, IL



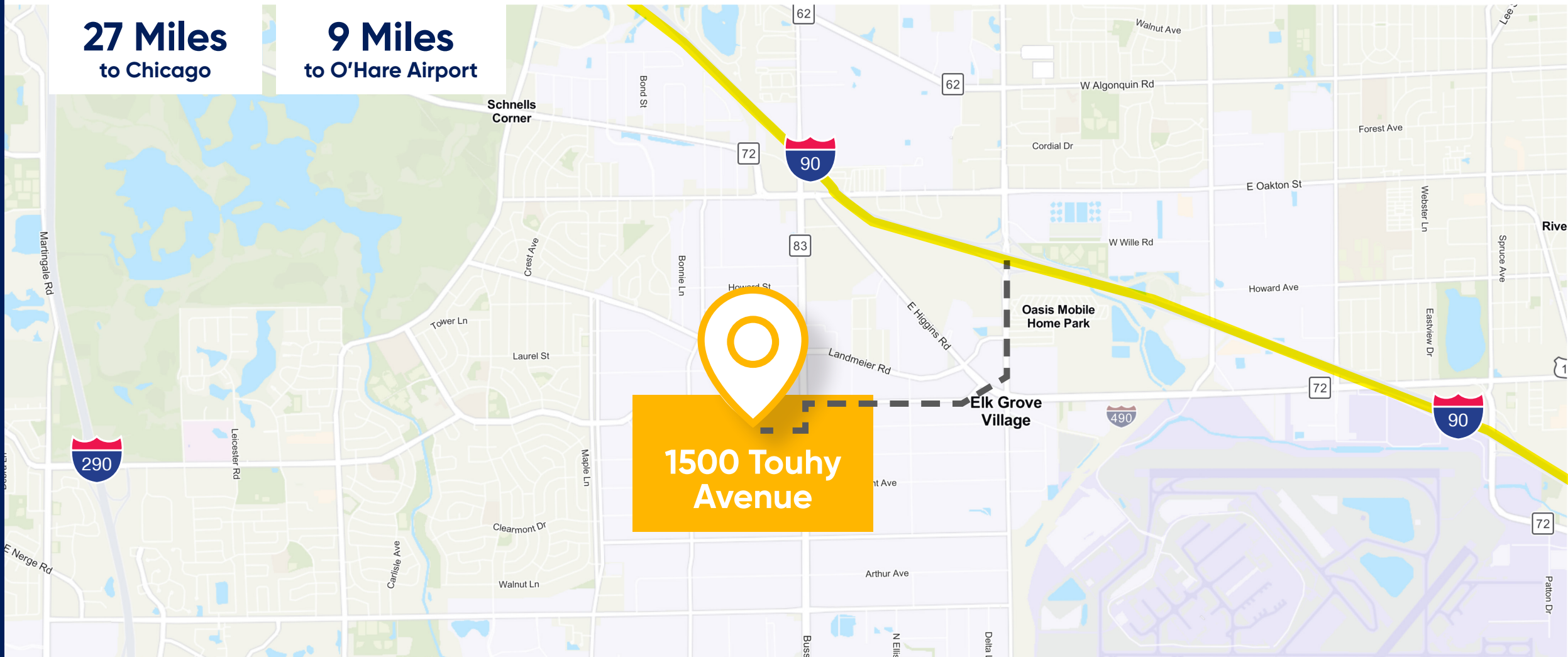
INDUSTRIAL BUILDING FOR SALE

Elk Grove/O'Hare Submarket

Surrounding Area

27 Miles
to Chicago

9 Miles
to O'Hare Airport



1500 Touhy Avenue

BUILDING FOR SALE

1500 Touhy Avenue

Elk Grove, IL

FOR MORE INFORMATION



Adam Ratajski

630.217.2323

aratajski@cresa.com



Jeff Counsell

312.589.8844

jcounsell@cresa.com

Even though obtained from sources deemed reliable, no warranty or representation, express or implied, is made as to the accuracy of the information herein, and it is subject to errors, omissions, change of price, rental or other conditions, withdrawal without notice, and to any special listing conditions imposed by our principals.