



**222 N LaSalle Street
Chicago, IL**

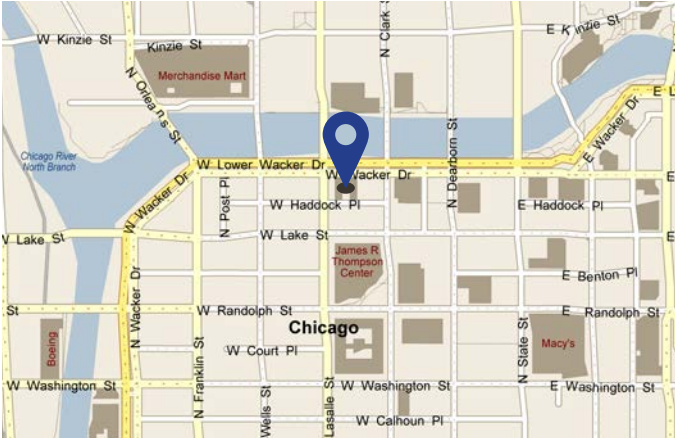
**Sublease
Available**

REDUCED RATE

Space Profile

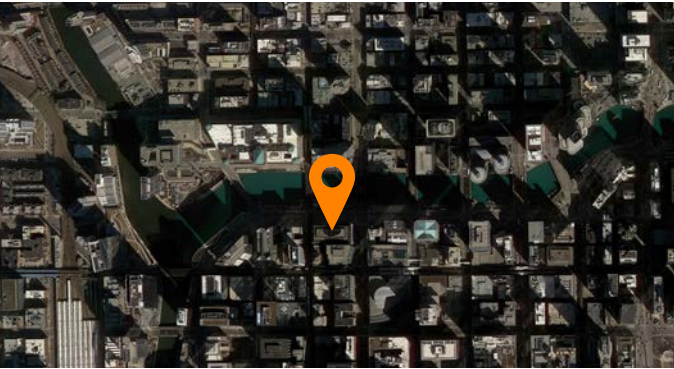
Premises	19,581 SF (Suite 1450)
Rental Rate	\$32.00 Gross plus Electric
Availability	Immediately
Term	Through May 30, 2027
Parking	4 unreserved spaces at current rate

Map



Features

- Furniture available
- Restored and updated historic riverfront building
- Fitness center, security guard
- Access to expressway, L, and bus lines



For More Information



David Miller
312.376.4124
dgmiller@cresa.com



Jason Kleiman
312.376.4132
jkleiman@cresa.com

150 North Wacker Drive, Suite 2900, Chicago, IL 60606

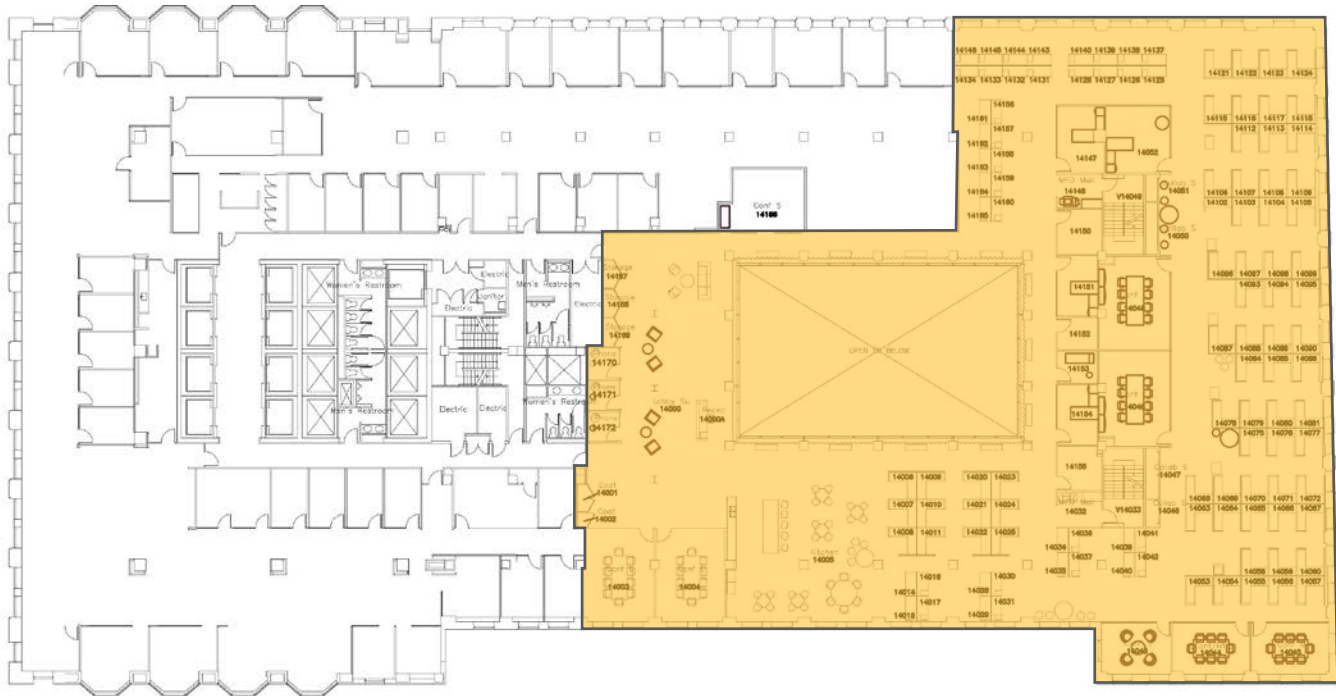


Even though obtained from sources deemed reliable, no warranty or representation, express or implied, is made as to the accuracy of the information herein, and it is subject to errors, omissions, change of price, rental or other conditions, withdrawal without notice, and to any special listing conditions imposed by our principals.



222 N LaSalle Street
Chicago, IL

Suite 1450 - 19,581 SF



For More Information



David Miller
312.376.4124
dgmiller@cresa.com

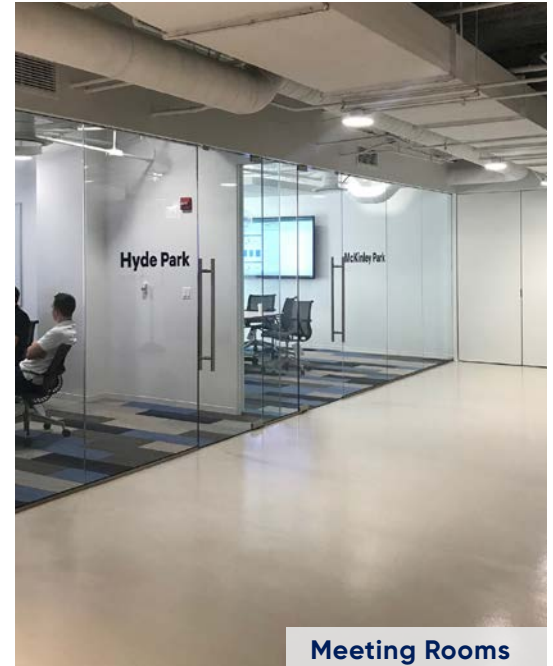


Jason Kleiman
312.376.4132
jkleiman@cresa.com



222 N LaSalle Street
Chicago, IL

Interior Photos



For More Information



David Miller
312.376.4124
dgmiller@cresa.com



Jason Kleiman
312.376.4132
jkleiman@cresa.com