

**Professional Services
Sublease with Incredible
Park and Lake View!**

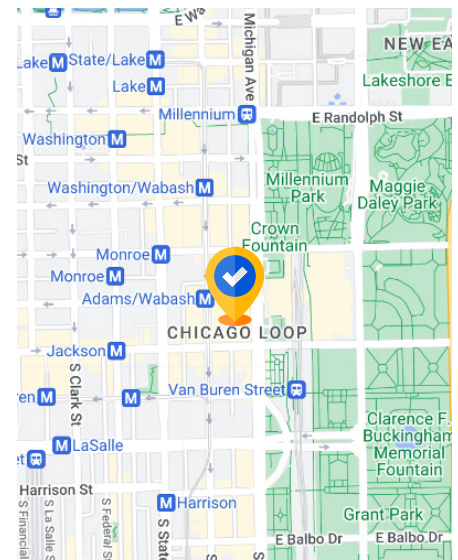
200 S Michigan Ave

Chicago, IL 60604

Overview

Building:	Borg-Warner Building
Premises:	21st Floor - 18,017 SF
Term:	Through March 31, 2027
Available:	Immediate
Rental Rate:	Aggressively negotiable
Furniture:	Fully furnished

- Full floor presence with prominent elevator identity
- Spacious & welcoming reception area
- Outstanding views of Millennium Park and Lake Michigan
- Wellness room with sink and refrigerator
- Executive bathroom & kitchenette
- Fully equipped community café
- Generous work room with extra storage and power



For more information:



Michael Marrion
773.655.8709 mobile
mmarrion@cresa.com



Liz Spence
847.710.2689 mobile
lspence@cresa.com

Sublease Available

cresa

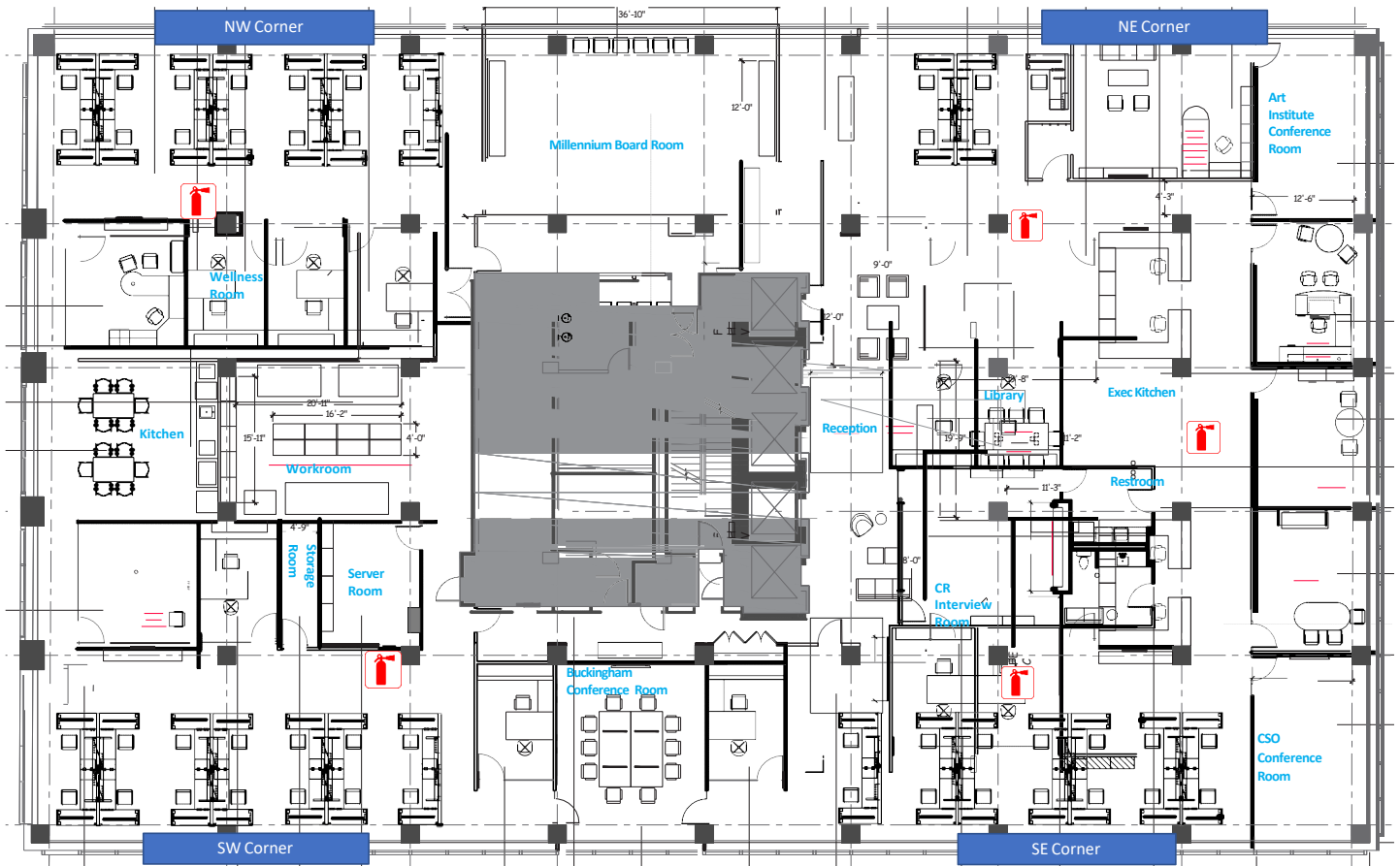
200 S Michigan Ave

Chicago, IL 60604



200 S Michigan Ave

Chicago, IL 60604



Space notes:

- 55 Workstations
- 4 Executive offices
- 10 Standard offices
- 1 Boardroom
- 3 Medium (8-10 people) conference rooms