

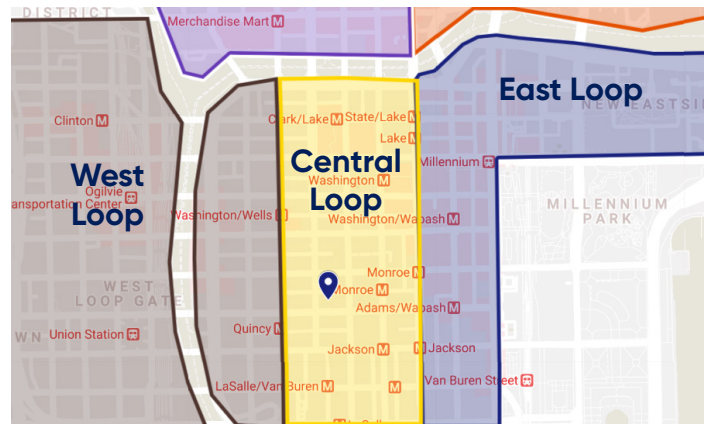
# 135 S LaSalle Chicago, IL

**COVID - Ready  
Sublease In The  
Central Loop**

## Space Profile

<b>Premises</b>	Suite 4050
<b>RSF</b>	3,847 RSF
<b>Rental Rate</b>	Negotiable
<b>Furniture</b>	Fully furnished
<b>Availability</b>	Immediately
<b>Term</b>	Through 8/1/2023 (Expiration)
<b>Submarket</b>	Central Loop
<b>Built</b>	1934; Renovated 2013
<b>Layout</b>	Mostly private office, w/ kitchen, conference room, mail/printer room, and side door entrance

## Map



## For More Information



**Michael Neff**  
312.376.4115  
mneff@cresa.com



**Michael Heaney**  
312.376.4103  
mheaney@cresa.com

Even though obtained from sources deemed reliable, no warranty or representation, express or implied, is made as to the accuracy of the information herein, and it is subject to errors, omissions, change of price, rental or other conditions, withdrawal without notice, and to any special listing conditions imposed by our principals.

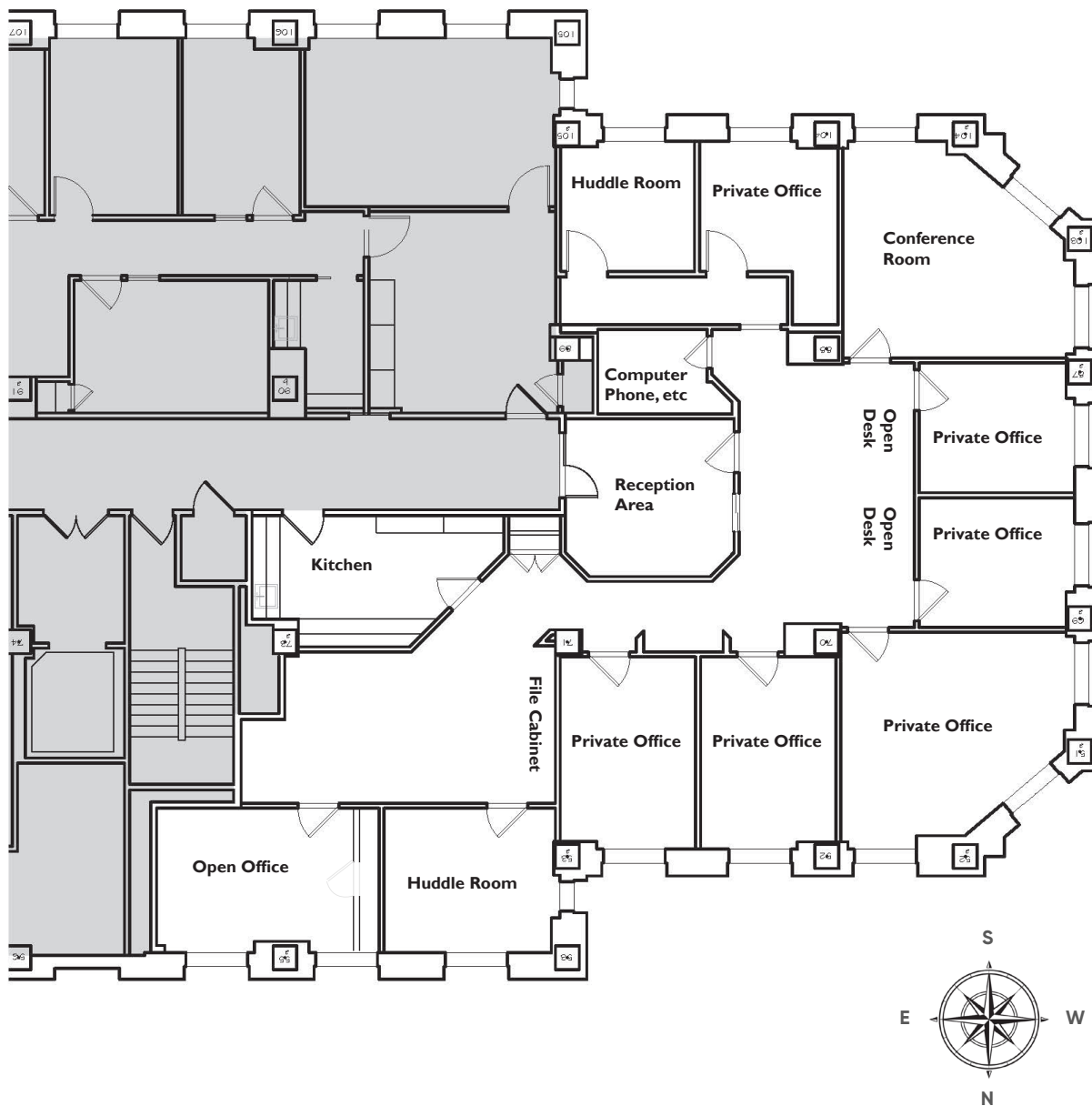


150 N Wacker Suite 2900 Chicago, IL 60606



# 135 S LaSalle Chicago, IL

Suite 4050 | 3,847 RSF



## For More Information

Cresa  
150 N Wacker  
Suite 2900  
Chicago, IL  
[cresa.com/chicago](http://cresa.com/chicago)



Michael Neff  
312.376.4115  
[mneff@cresa.com](mailto:mneff@cresa.com)



Michael Heaney  
312.376.4103  
[mheaney@cresa.com](mailto:mheaney@cresa.com)





**135 S LaSalle  
Chicago, IL**



### For More Information

Cresa  
150 N Wacker  
Suite 2900  
Chicago, IL  
[cresa.com/chicago](http://cresa.com/chicago)



Michael Neff  
312.376.4115  
[mneff@cresa.com](mailto:mneff@cresa.com)



Michael Heaney  
312.376.4103  
[mheaney@cresa.com](mailto:mheaney@cresa.com)