

# Edinburgh Place

## 5,811 sf for Lease



VIEW THE VIRTUAL TOUR 

**Damon Harmon, CPA, CGA**  
403.875.3133  
dharmon@cresa.com

**Nicole Bennett**  
403.585.7959  
nbennett@cresa.com



# Edinburgh Place



**5,811 sf available immediately**

## Space Profile

Premises:	Suite 800: 2,057 sf Suite 805: 3,754 sf
Availability:	Immediately
Term:	1-5 years
Gross Rental Rate:	Market rates
T.I.A.:	As-is
Op. Costs & Taxes:	\$12.28 per sf (est. 2023)
Parking:	1 stall at market rates

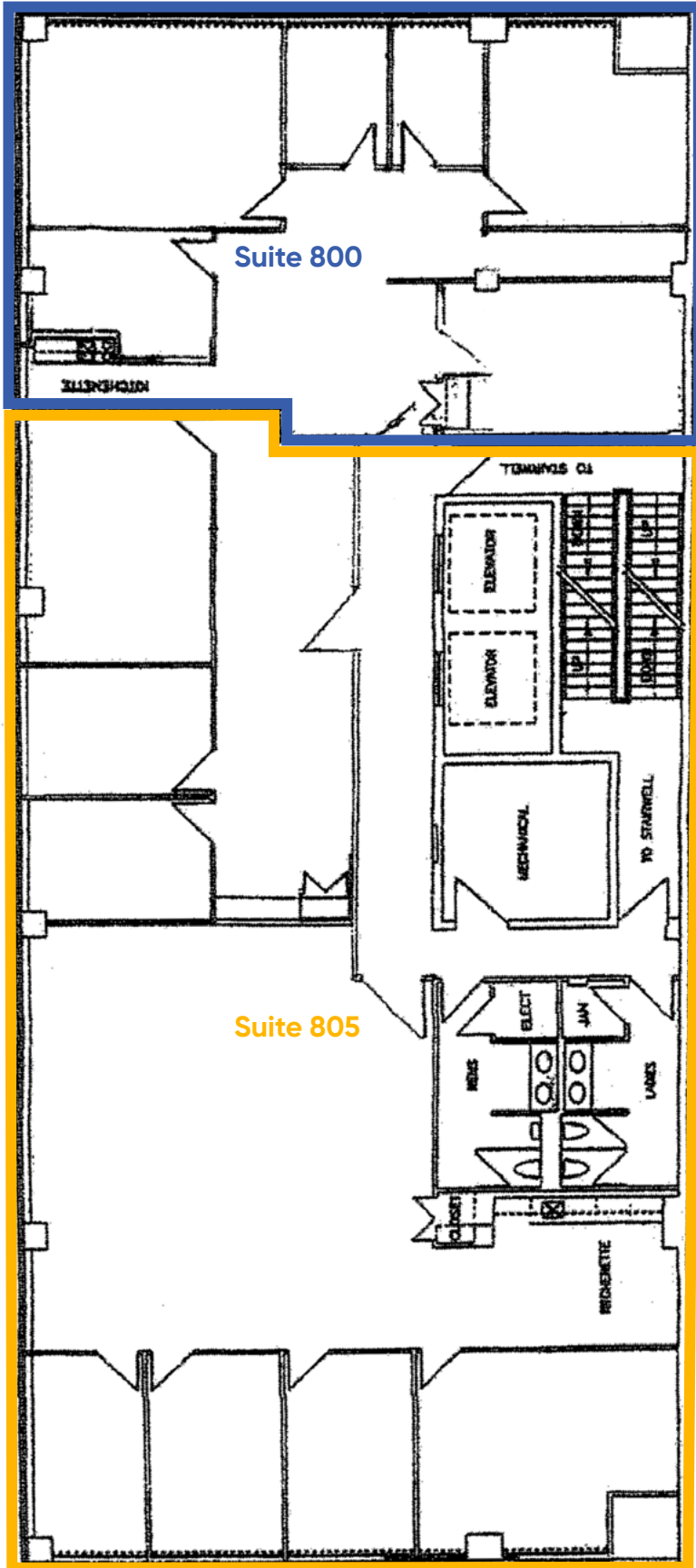


## Building Information

Address:	900 Sixth Avenue SW
Year of Completion:	1980
Number of Floors:	10
Rentable Area:	52,000 sf
Average Floor plate:	5,625 sf
Landlord/ Building Manager:	Amhurst Property Management

## Features & Amenities

- Suites can be leased together or separately
- Exposed to lots of natural light
- Full floor opportunity
- Furniture is available
- Walking distance to Bow River pathway system
- Half a block to Plus 15 access
- Two blocks to LRT



**8th Floor**  
**5,811 sf**

**Suite 800**  
5 offices

Meeting room

Kitchen

Storage

**Suite 805**  
6 offices

Reception

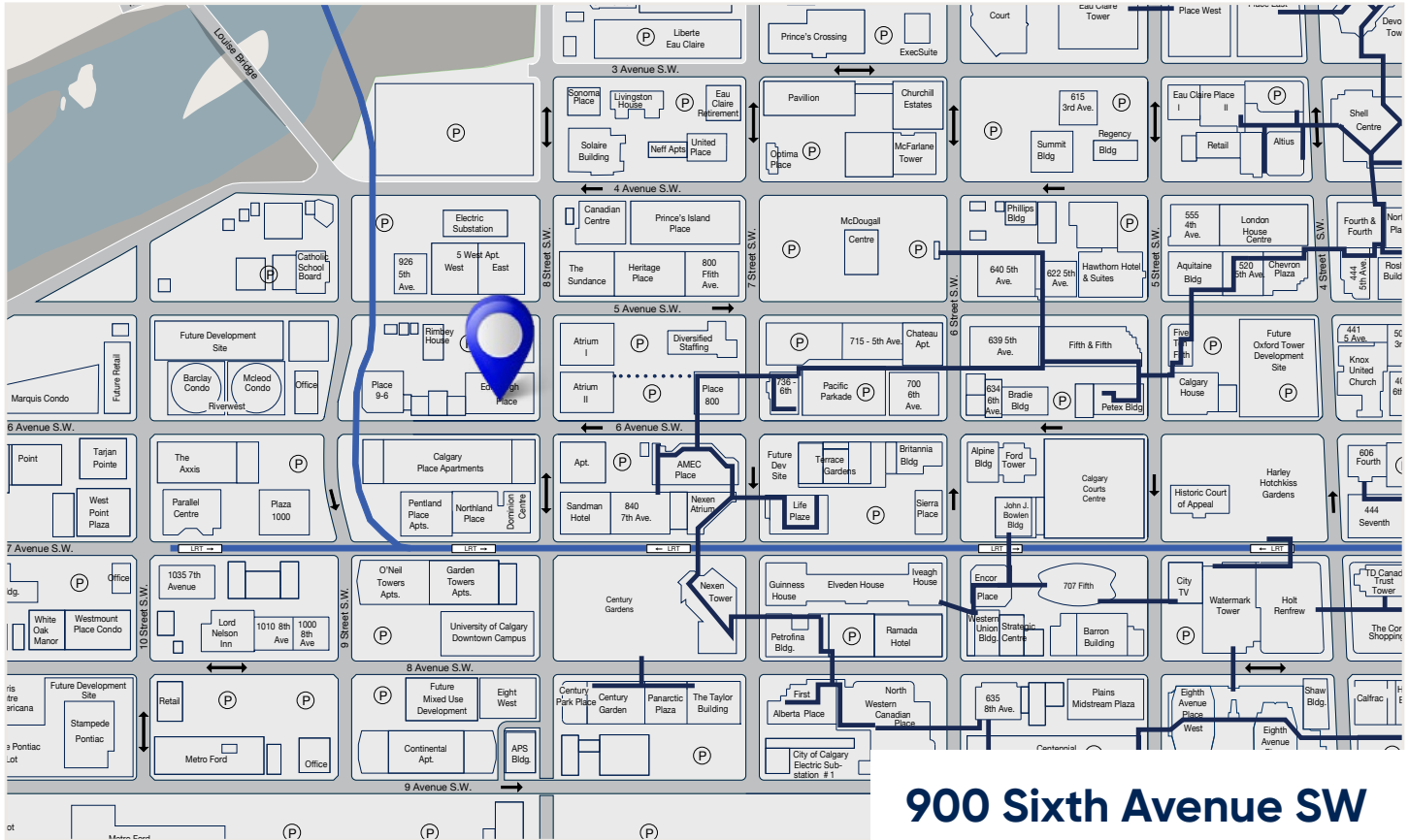
Boardroom

Open area

Kitchen



# Edinburgh Place



## Agent Information

**Damon Harmon, CPA, CGA**  
403.875.3133  
dharmon@cresa.com

**Nicole Bennett**  
403.585.7959  
nbennett@cresa.com

## Cresa

606 - 4 Street SW, Suite 1400 | Calgary, AB T2P 1T1 | 403.571.8080 cresa.com

Even though obtained from sources deemed reliable, no warranty or representation, express or implied, is made as to the accuracy of the information herein, and it is subject to errors, omissions, change of price, rental or other conditions, withdrawal without notice, and to any special listing conditions imposed by our principals.

