



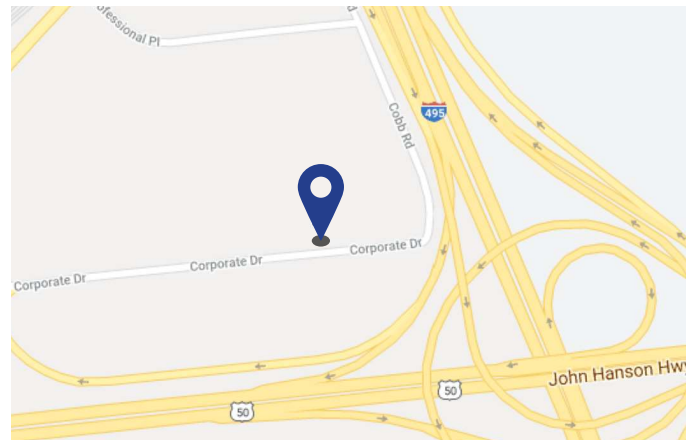
## Metro Executive Terrace 8400 Corporate Drive Landover, MD

## Sublease Available

### Space Profile

<b>Premises</b>	5th Floor
<b>RSF</b>	6,820 RSF
<b>Rental Rate</b>	\$19.00/SF
<b>Availability</b>	Immediate
<b>Term</b>	Through 2/29/2024
<b>Furniture</b>	Included
<b>Parking</b>	3.2/1,000 SF

### Map



### Features

- Fitness Center
- Atrium
- On-site Cafe
- Shared Conference Facility
- Shuttle to New Carrollton Metro

### For More Information

Cresa  
1800 M Street, NW  
Suite 300N  
Washington, DC 20036  
[cresa.com/washingtondc](http://cresa.com/washingtondc)



Daniel J. Shapiro  
301.841.6542  
[dshapiro@cresa.com](mailto:dshapiro@cresa.com)



Ross T. Brannigan  
781.223.0460  
[rbrannigan@cresa.com](mailto:rbrannigan@cresa.com)



**Metro Executive Terrace  
8400 Corporate Drive  
Landover, MD**

**5th Floor - 6,820 SF**



**For More Information**

Cresa  
1800 M Street, NW  
Suite 300N  
Washington, DC 20036  
[cresa.com/washingtondc](http://cresa.com/washingtondc)



Daniel J. Shapiro  
301.841.6542  
[dshapiro@cresa.com](mailto:dshapiro@cresa.com)

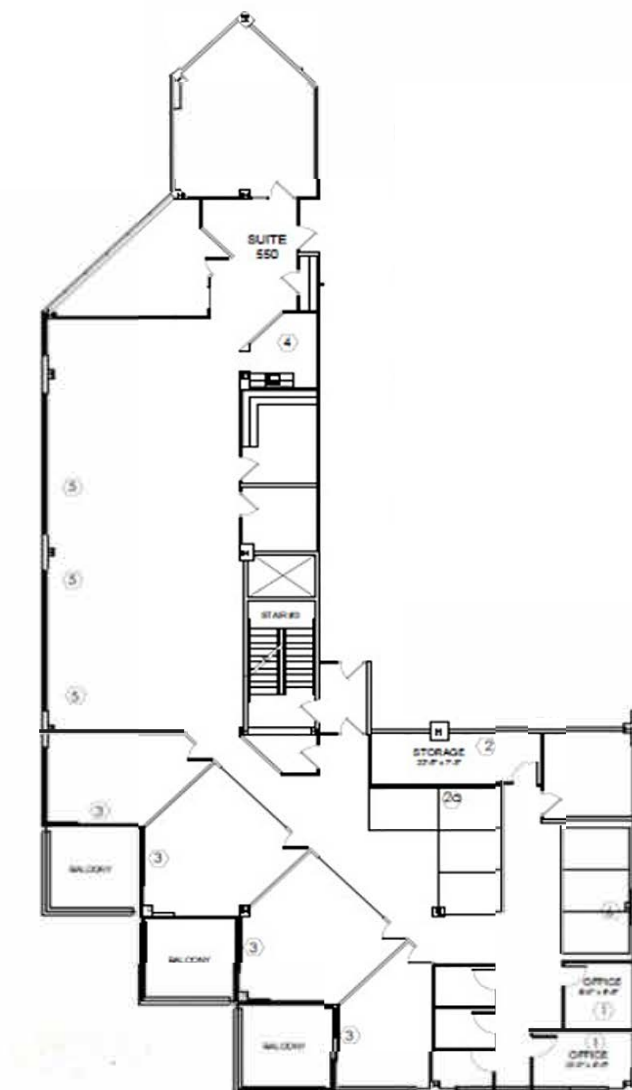


Ross T. Brannigan  
781.223.0460  
[rbrannigan@cresa.com](mailto:rbrannigan@cresa.com)



**Metro Executive Terrace  
8400 Corporate Drive  
Landover, MD**

**5th Floor - 6,820 SF**



**For More Information**

Cresa  
1800 M Street, NW  
Suite 300N  
Washington, DC 20036  
[cresa.com/washingtondc](http://cresa.com/washingtondc)



Daniel J. Shapiro  
301.841.6542  
[dshapiro@cresa.com](mailto:dshapiro@cresa.com)



Ross T. Brannigan  
781.223.0460  
[rbrannigan@cresa.com](mailto:rbrannigan@cresa.com)