

SUBLEASE **±12,990 SF**

3001 Bee Caves Rd.

Contact

Justin Mason
jmason@cresa.com
806.206.0759

cresa 

PROPERTY INFORMATION

SUBLEASE

Treemont Plaza
3001 Bee Caves Rd. Suite 200
Austin, TX 78746

Rate: \$21.50/SF

NNN: \$12.22/PSF

Size: 12,990 SF

Available: Immediate

Term: November 30, 2024



Large Windows, Natural Light



Secure Entry Access



Outdoor Pavillion



Full-sized Basketball Court



Parking at 4/1000 SF



Great Corporate Neighborhood



Scenic Views



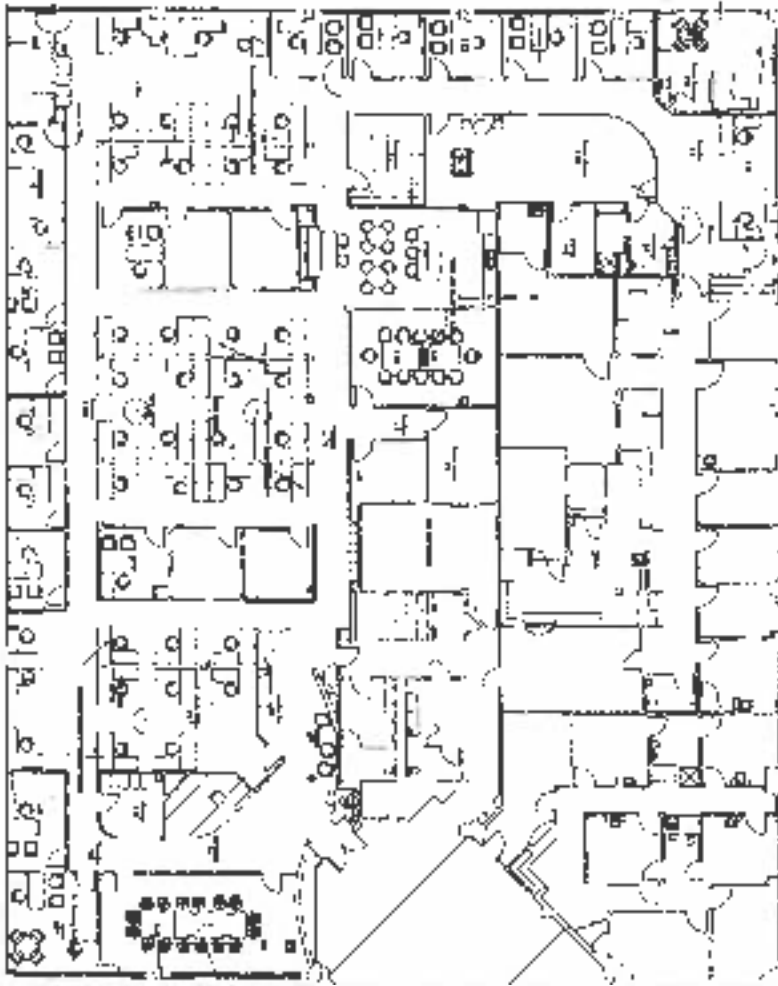
Easy Access to Highways



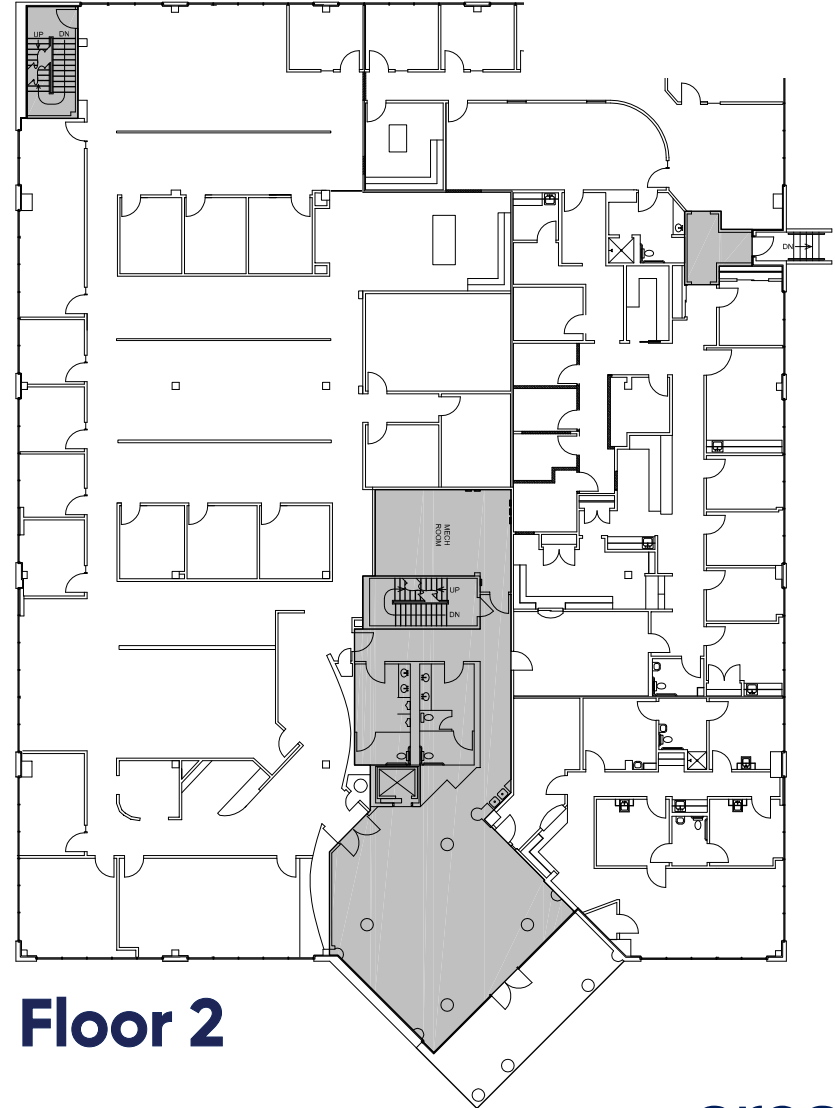
FLOORPLAN

± 12,990 SF

3001 BEE CAVES RD.

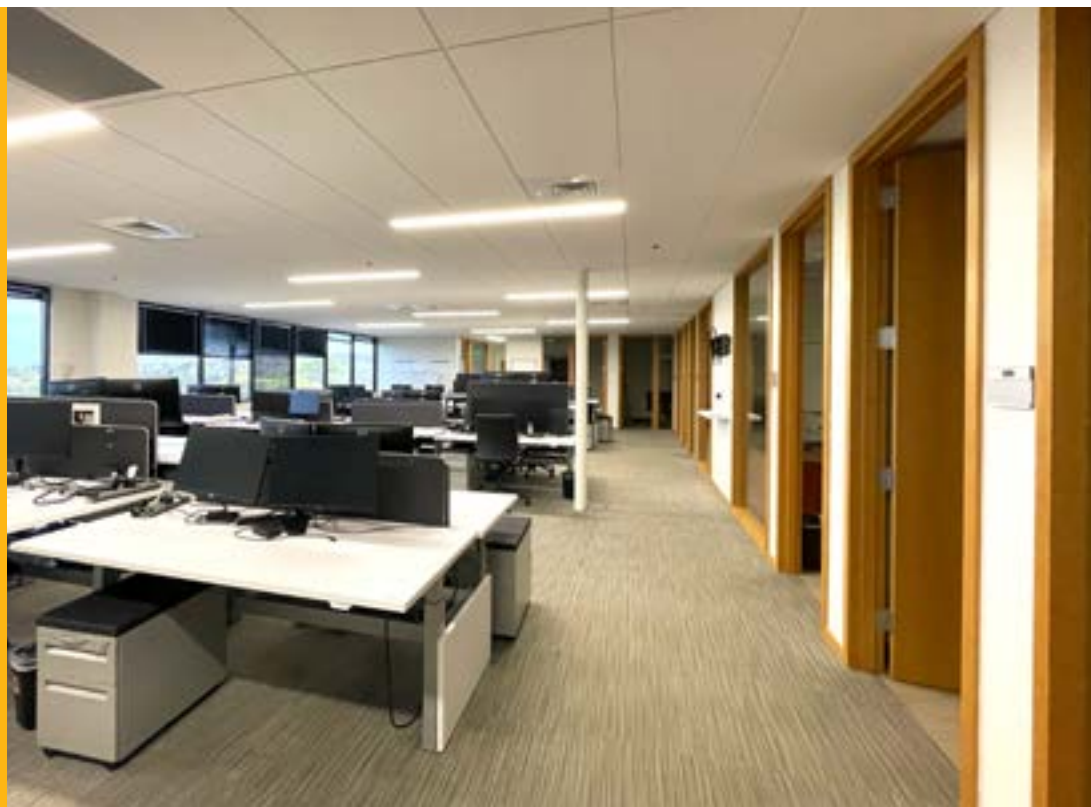


Floor 1



Floor 2





AREA MAP

3001 BEE CAVES RD.

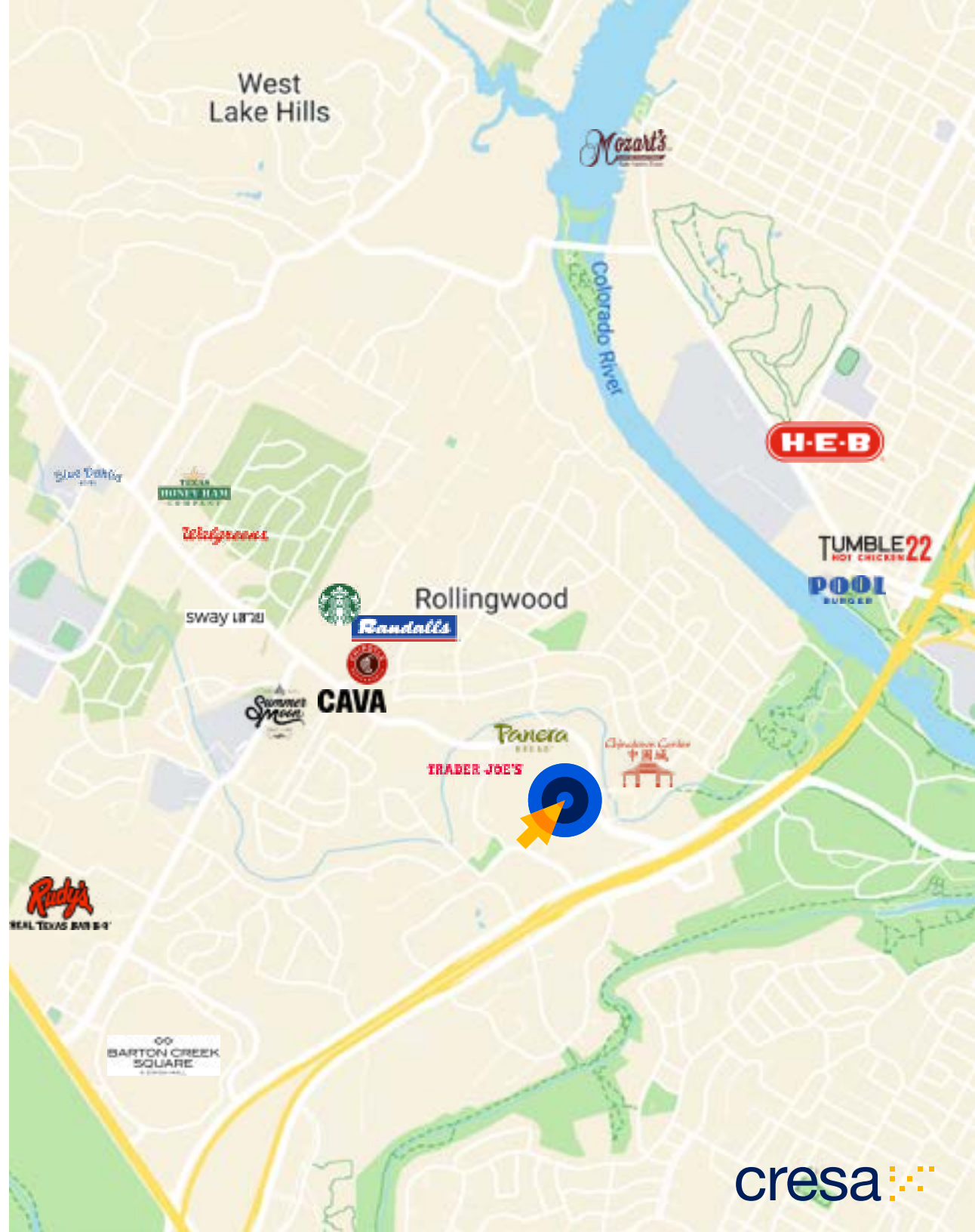
- 1 Sway
- 2 Randalls Grocery
- 3 Chinatown
- 4 Blue Dahlia
- 5 Rudy's BBQ
- 6 CAVA
- 7 Summermoon Coffee
- 8 Texas Honey Ham
- 9 Panera
- 10 Trader Joe's

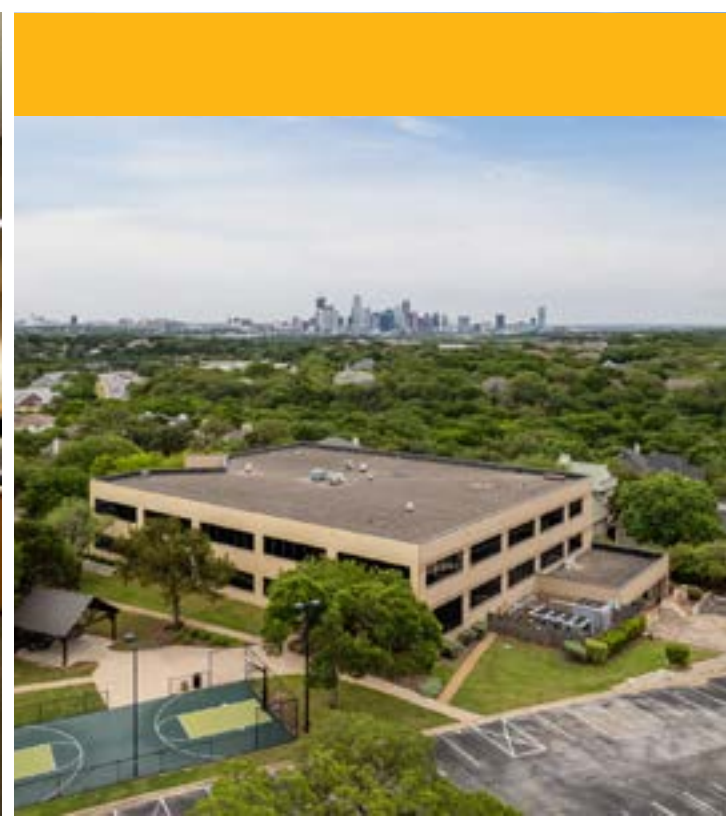


19 minutes to Austin Airport



10 minutes to Downtown Austin







Contact Broker

Justin Mason
jmason@cresa.com
806.206.0759

Address

901 W. 9th Street
Suite 111
Austin, TX 78703

[TREC Information on Broker Services](#)

Even though obtained from sources deemed reliable, no warranty or representation, express or implied, is made as to the accuracy of the information herein, and it is subject to errors, omissions, change of price, rental or other conditions, withdrawal without notice, and to any special listing conditions imposed by our principals.