

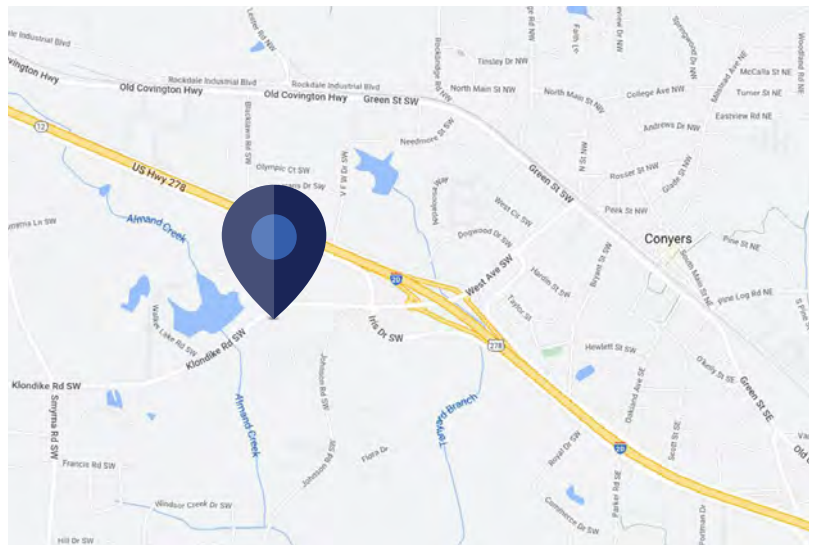
Sublease

# Summit Grove Office Park

1510 Klondike Rd SW  
Conyers, GA 30094

## Space Profile:

<b>Premises</b>	Suite 400
<b>RSF</b>	12,875 Potentially subdivisible to ± 6,000 SF
<b>Rental Rate</b>	\$16.00/SF
<b>Availability</b>	60 Days
<b>Term</b>	Through April 2025
<b>Building Class</b>	B
<b>Submarket</b>	Conyers
<b>Built</b>	2003
<b>Parking</b>	3.49/1,000 SF
<b>Features</b>	Fully Furnished 1/2 Mile to I-20



## Contact:



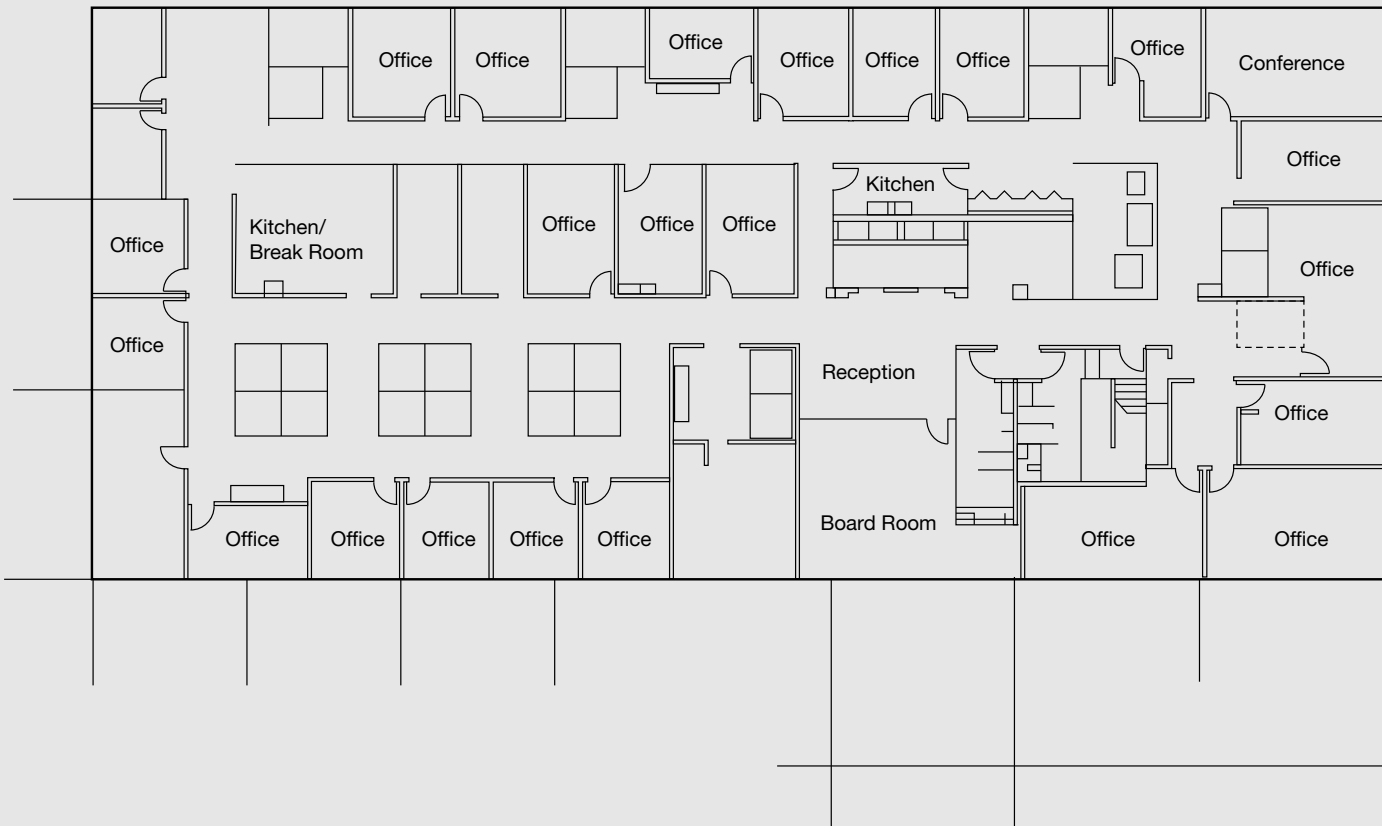
**Billy Hobbs**  
404.446.1579  
bhobbs@cresa.com



**Ed Easterlin**  
404.446.1570  
eeasterlin@cresa.com



**Summit Grove Office Park**  
**1510 Klondike Rd SW, Conyers**



Cresa © 2019. All rights reserved. The information contained in this document has been obtained from sources believed reliable. While Cresa does not doubt its accuracy, Cresa has not verified it and makes no guarantee, warranty, or representation about it. It is your responsibility to independently confirm its accuracy and completeness. Any projections, opinions, assumptions or estimates used are for example only and do not represent the current or future performance of the property. The value of this transaction to you depends on tax and other factors which should be evaluated by your tax, financial and legal advisors. You and your advisors should conduct a careful, independent investigation of the property to determine to your satisfaction the suitability of the property for your needs.



## Summit Grove Office Park

1510 Klondike Rd SW, Conyers



cresa

Cresa © 2019. All rights reserved. The information contained in this document has been obtained from sources believed reliable. While Cresa does not doubt its accuracy, Cresa has not verified it and makes no guarantee, warranty, or representation about it. It is your responsibility to independently confirm its accuracy and completeness. Any projections, opinions, assumptions or estimates used are for example only and do not represent the current or future performance of the property. The value of this transaction to you depends on tax and other factors which should be evaluated by your tax, financial and legal advisors. You and your advisors should conduct a careful, independent investigation of the property to determine to your satisfaction the suitability of the property for your needs.