

# Sale

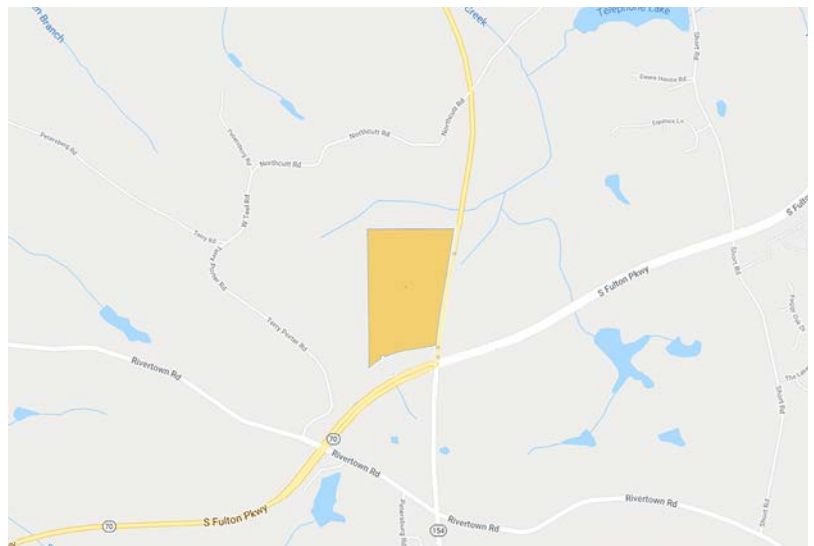


## Vacant Land

NEC Cascade Palmetto Hwy, South Fulton GA

### Property Profile

<b>Total Acres</b>	56.05
<b>Asking Price</b>	Call for Asking Price
<b>Legal Description</b>	Parcel No. 07 130000751016
<b>Proposed Use</b>	Residential, commercial, industrial
<b>Frontage</b>	1,864' on Cascade Palmetto Hwy
<b>Water/Sewer</b>	Nearby



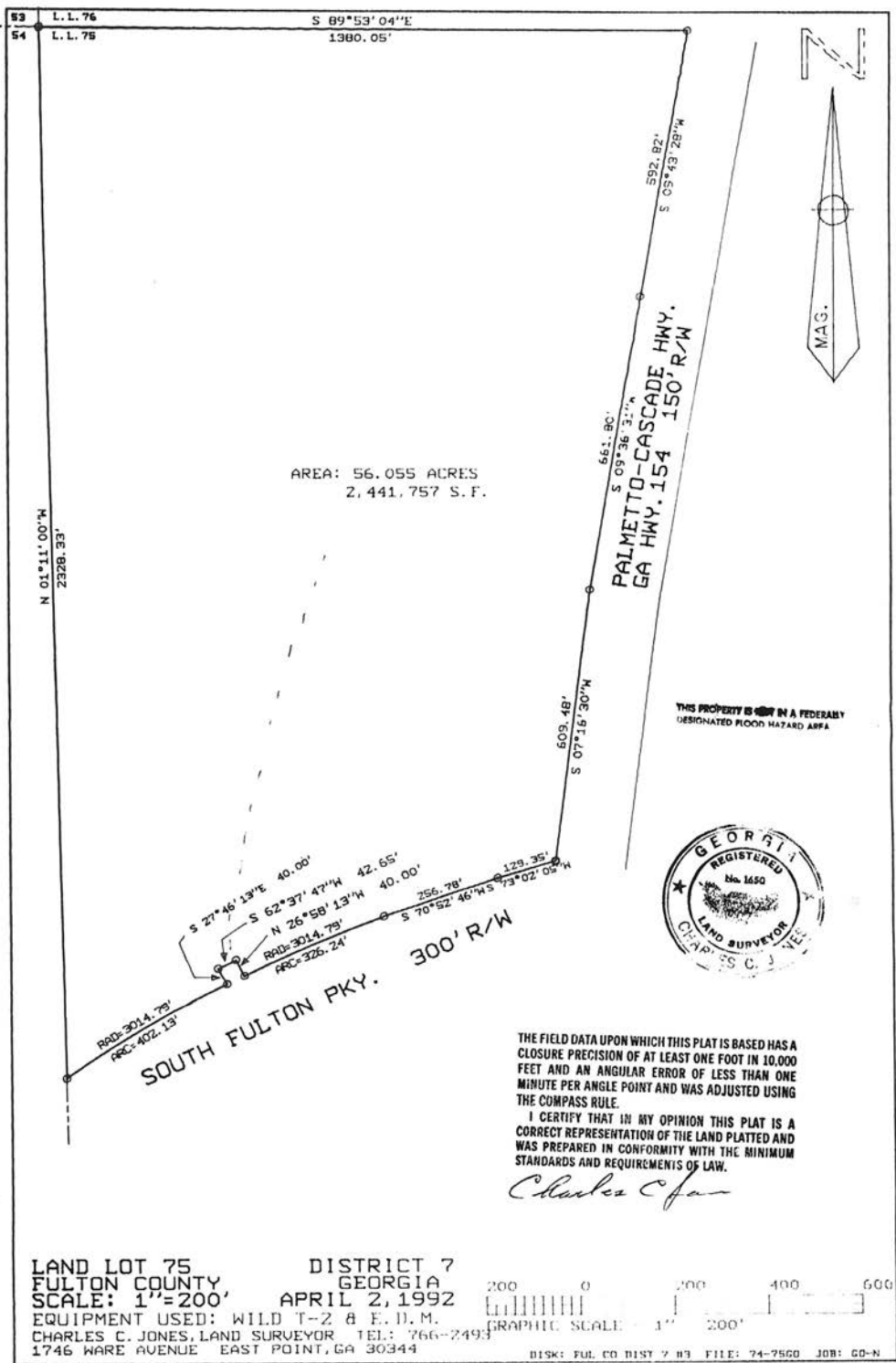
### Contact:



**Scott Hardeman**  
404.446.1863  
shardeman@cresa.com

cresa

# Land Survey







**NEC**  
**Cascade Palmetto Hwy, South Fulton GA**

**Contact:**



**Scott Hardeman**  
404.446.1863  
shardeman@cresa.com

**cresa** :: ::

Cresa © 2019. All rights reserved. The information contained in this document has been obtained from sources believed reliable. While Cresa does not doubt its accuracy, Cresa has not verified it and makes no guarantee, warranty, or representation about it. It is your responsibility to independently confirm its accuracy and completeness. Any projections, opinions, assumptions or estimates used are for example only and do not represent the current or future performance of the property. The value of this transaction to you depends on tax and other factors which should be evaluated by your tax, financial and legal advisors. You and your advisors should conduct a careful, independent investigation of the property to determine to your satisfaction the suitability of the property for your needs.