

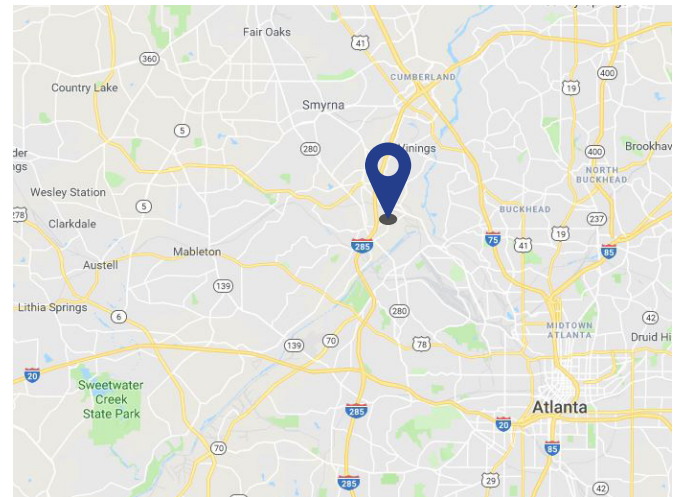
PRICE REDUCED

Available for Sale

2355 Church Rd SE,
Atlanta, GA 30339

Space Profile

Premises:	25,059 SF
Office:	5,059 SF
Acreage:	2.49 AC
Class:	B
Year Built:	2001
Clear Height:	22'-24'
Dock High:	2 Dock High w/ plate levelers
Drive In:	1 Oversized Drive In
Zoning:	Light Industrial
Parking:	28 spaces (additional spaces under construction)



Features

- 1,800 amps of power
- Sprinkler system
- Inside I-285
- Skylights

For More Information

Michael Bennett
404.446.1862
mbennett@cresa.com

Jim Bob Taylor
404.446.1864
jbtaylor@cresa.com

Cresa
3475 Piedmont Road
Suite 900
Atlanta, GA 30305
cresa.com/atlanta



2355 Church Rd SE,
Atlanta, GA 30339

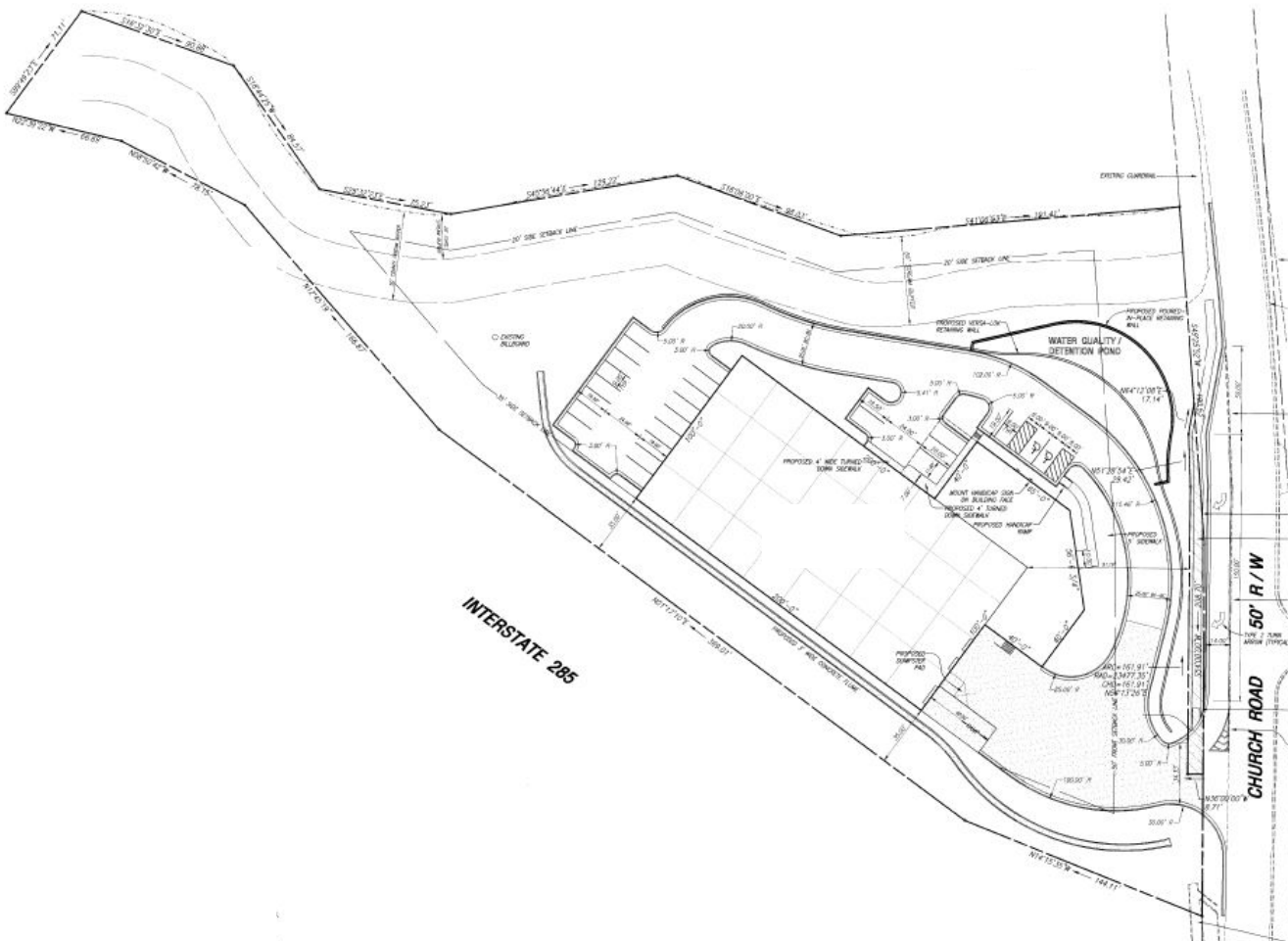
Pictures



Cresa
3475 Piedmont Road
Suite 900
Atlanta, GA 30305
cresa.com/atlanta

Michael Bennett
404.446.1862
mbennett@cresa.com

Jim Bob Taylor
404.446.1864
jbtaylor@cresa.com



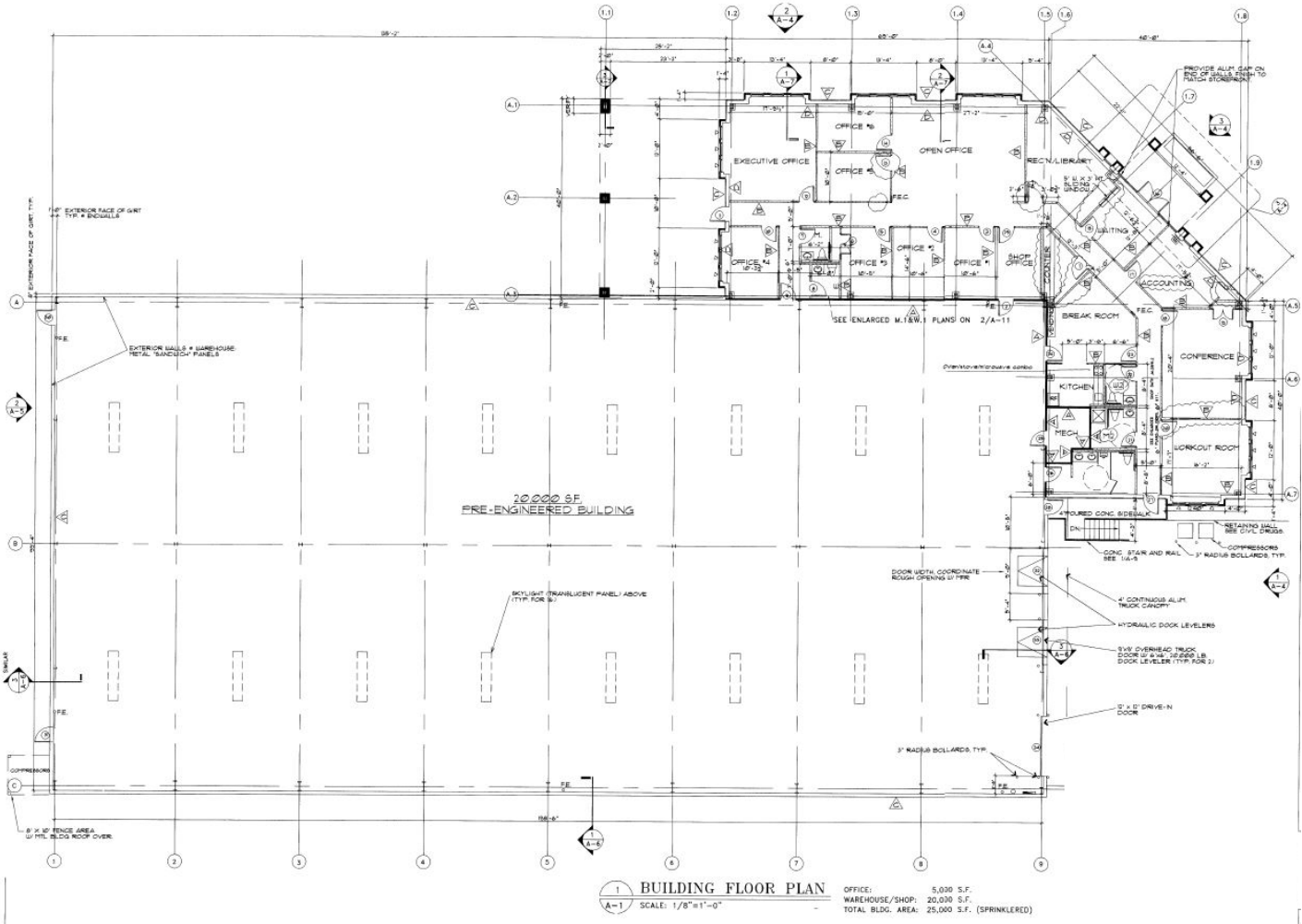
For More Information

Cresa
3475 Piedmont Road
Suite 900
Atlanta, GA 30305
cresa.com/atlanta

Michael Bennett
404.446.1862
mbennett@cresa.com

Jim Bob Taylor
404.446.1864
jbtaylor@cresa.com

Floor Plan



For More Information

Cresa
3475 Piedmont Road
Suite 900
Atlanta, GA 30305
cresa.com/atlanta

Michael Bennett
404.446.1862
mbennett@cresa.com

Jim Bob Taylor
404.446.1864
jbtaylor@cresa.com