



For Sale

2220 Centennial Drive

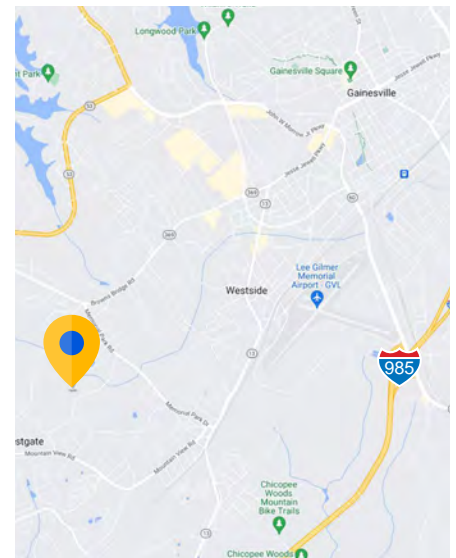
Gainesville, GA 30504

Overview

Building Size:	45,120 SF
Lot Size:	9.18 Acres
Year Built:	1987
Doors:	4 Docks, 5 Drive Ins
Zoning:	GB
Parcel Number:	08013 003003
Parking:	51 Surface Spaces
Sale Price:	Inquire
Clear Height:	22'

Space Specs

- Large outdoor storage area
- Property is less than a 10-minute drive from I-985. Other major roads nearby include Highway 53, Browns Bridge Road, and McEver Road.



For more information:



Matthew Skole
678.371.2101
mskole@cresa.com



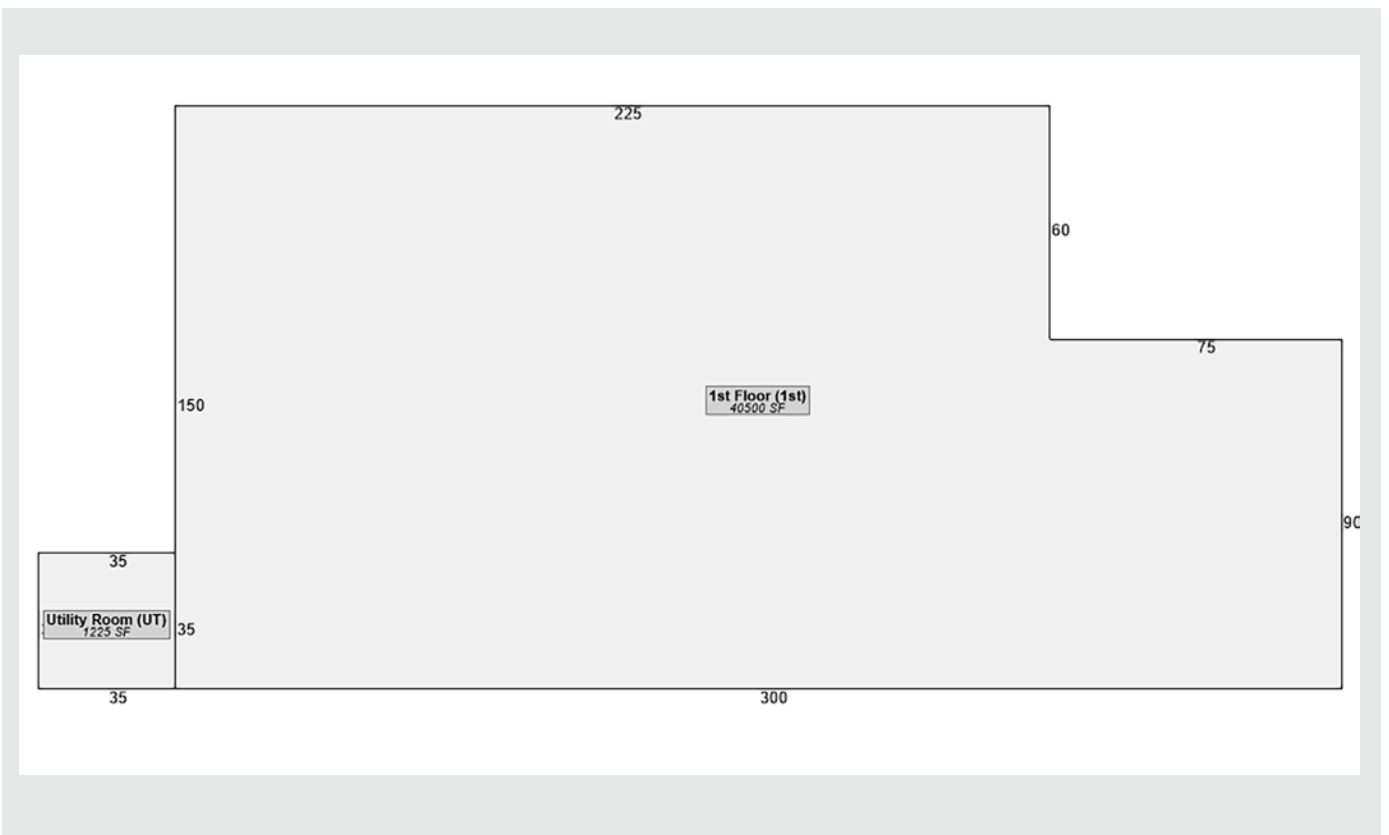
Jim Bob Taylor
404.446.1864
jbtaylor@cresa.com

For Sale



2220 Centennial Drive

Gainesville, GA 30504



For Sale

cresa

2220 Centennial Drive

Gainesville, GA 30504

