



Amenity Center

Sublease Available



Constitution Place

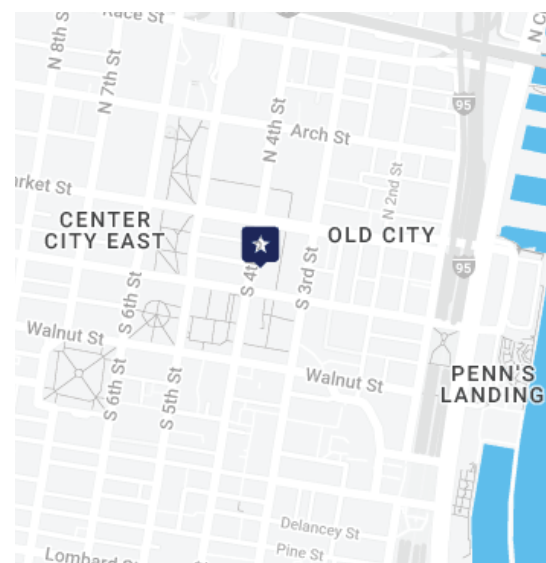
325 Chestnut St.
Philadelphia, PA

Overview

Premises:	Suite 700
RSF:	5,417 SF - can demise to 1,878 OR 3,539 SF
Rental Rate:	\$31.00/SF Full Service
Availability:	March 1, 2025
Term:	Thru May 31, 2027
Building Class:	A
Submarket:	Independence Hall
Renovated:	2017

Features:

- Fully furnished and cabled, move in ready
- Double glass door entry off elevator
- Exposed ceiling, modern finishes
- Corner suite with Independence Hall views
- Tenant only fitness center
- Tenant only amenity center with conference rooms, seating, and an outdoor terrace



For more information:

Eric Pinchak
570.573.3930
epinchak@cresa.com

Chris Aitken
610.639.2099
caitken@cresa.com

Cresa
1 Fayette St, Suite 100,
Conshohocken, PA 19428
cresa.com/conshohocken-pa

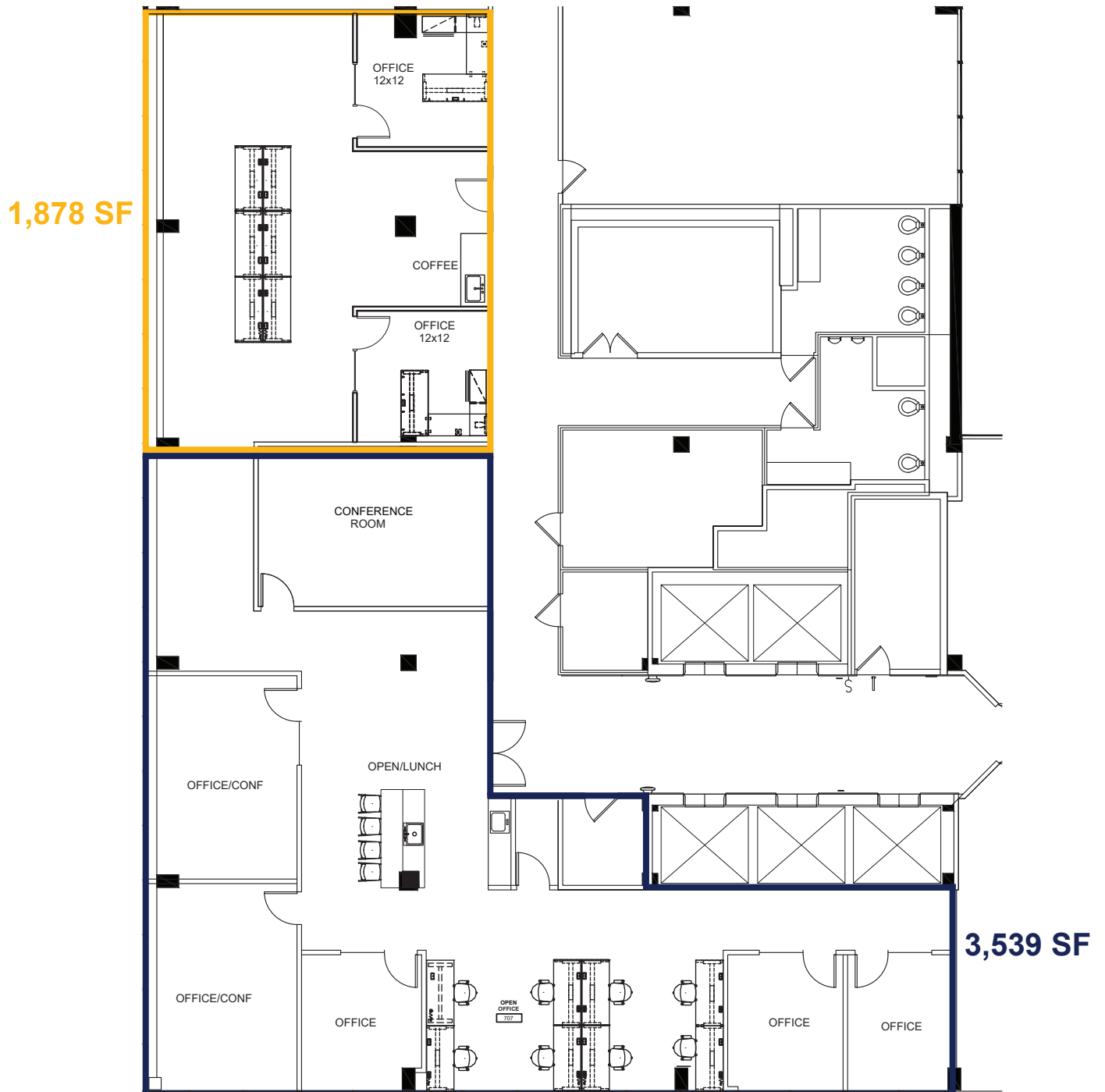
Sublease Available

cresa

Constitution Place

325 Chestnut St.
Philadelphia, PA

Floor Plan

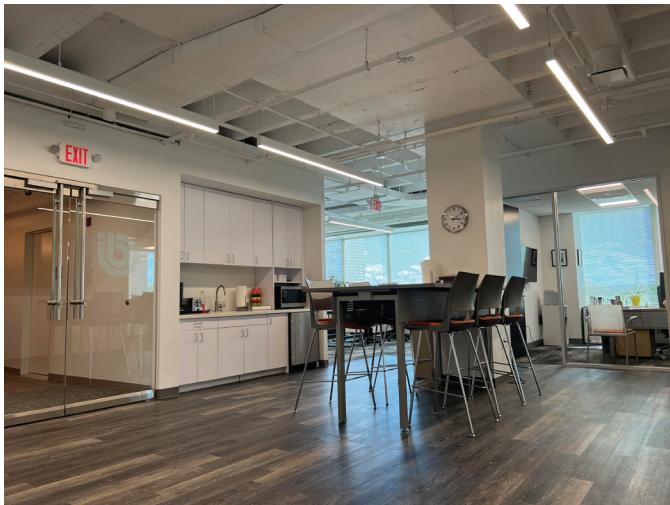


Sublease Available

cresa

Constitution Place

325 Chestnut St., Philadelphia, PA



Even though obtained from sources deemed reliable, no warranty or representation, express or implied, is made as to the accuracy of the information herein, and it is subject to errors, omissions, change of price, rental or other conditions, withdrawal without notice, and to any special listing conditions imposed by our principals.

Eric Pinchak
570.573.3930
epinchak@cresa.com

Chris Aitken
610.639.2099
caitken@cresa.com