

cresa

101 CALIFORNIA ST  
SAN FRANCISCO, CA

# NEVER OCCUPIED

HIGH-END  
PLUG & PLAY  
SPACE

13,000 & 23,515 RSF  
AVAILABLE

---



**Jamie Saunders**

415.269.3869  
jsaunders@cresa.com  
BRE# 01417958

**Janna Luce**

415.309.0067  
jluce@cresa.com  
BRE# 01255526

**Patrick Hearst**

858.334.5301  
phearst@cresa.com  
BRE# 01994957

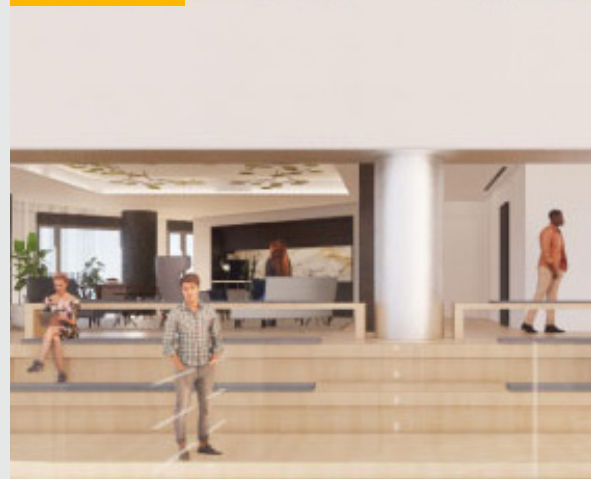
# SPACE PROFILE

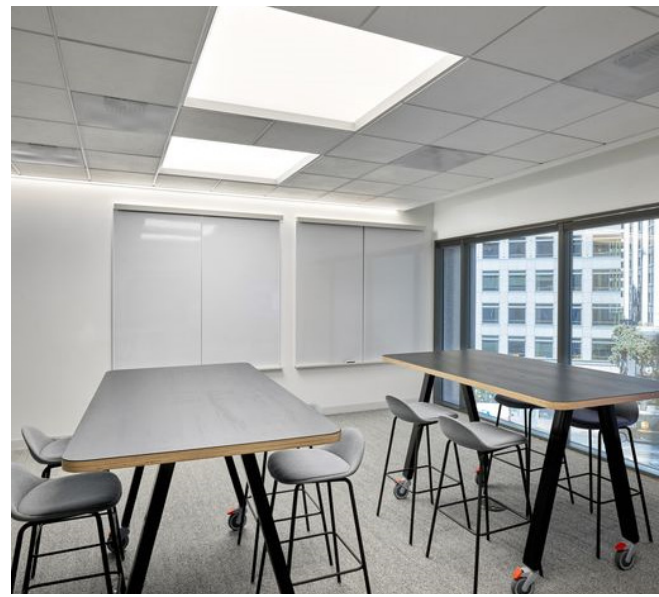
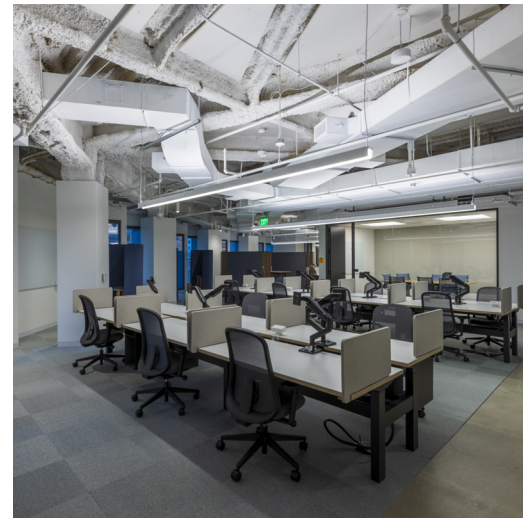
7th Floor	2nd Floor
Available Now	Available Now
13,000 RSF	23,515 RSF
1-3 year term	2-5 year term

Please inquire for rental rate

## AMENITIES

- Premier Class-A Financial District Building
- 24/7 security and turnstiles
- Multiple restaurants
- Car and bicycle parking
- Showers and lockers
- Fitness Center
- New tenant clubhouse and plaza coming soon

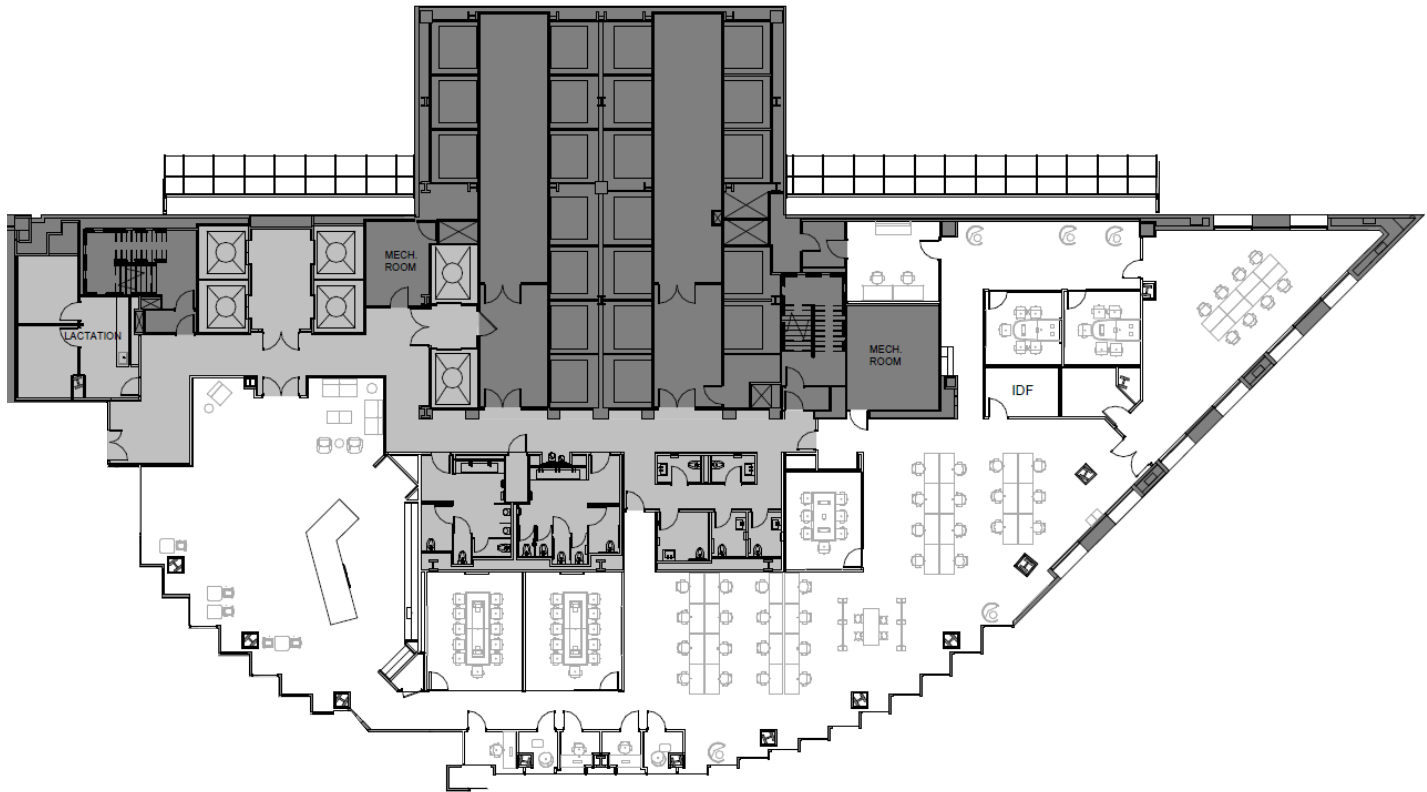




7th Floor Interior Photos

Cresa © 2023. All rights reserved. The information contained in this document has been obtained from sources believed reliable. While Cresa does not doubt its accuracy, Cresa has not verified it and makes no guarantee, warranty, or representation about it. It is your responsibility to independently confirm its accuracy and completeness. Any projections, opinions, assumptions or estimates used are for example only and do not represent the current or future performance of the property. The value of this transaction to you depends on tax and other factors which should be evaluated by your tax, financial and legal advisors. You and your advisors should conduct a careful, independent investigation of the property to determine to your satisfaction the suitability of the property for your needs.

# 7TH FLOOR | 13,000 RSF



## FLOOR NOTES

- Never occupied high-end plug & play buildout
- 30 workstations
- 2 large conference rooms
- 5 medium conference rooms
- 5 phone rooms
- Open kitchen
- Reception area
- Lounge area
- Gender neutral restrooms
- Lactation Suite

Contact for more information or tour

### **Jamie Saunders**

415.269.3869  
jsaunders@cresa.com  
BRE# 01417958

### **Janna Luce**

415.309.0067  
jluce@cresa.com  
BRE# 01255526

### **Patrick Hearst**

858.334.5301  
phearst@cresa.com  
BRE# 01994957



2nd Floor Interior Photos

Cresa © 2023. All rights reserved. The information contained in this document has been obtained from sources believed reliable. While Cresa does not doubt its accuracy, Cresa has not verified it and makes no guarantee, warranty, or representation about it. It is your responsibility to independently confirm its accuracy and completeness. Any projections, opinions, assumptions or estimates used are for example only and do not represent the current or future performance of the property. The value of this transaction to you depends on tax and other factors which should be evaluated by your tax, financial and legal advisors. You and your advisors should conduct a careful, independent investigation of the property to determine to your satisfaction the suitability of the property for your needs.

# 2ND FLOOR | 23,515 RSF



## FLOOR NOTES

- Never occupied high-end plug & play buildout
- 64 workstations
- 3 large conference rooms
- 10 medium conference rooms
- 9 phone rooms
- Large multi purpose room / all hands area
- Open kitchen
- Reception area
- Multiple lounge areas
- Lactation Suite
- Gender neutral restrooms

Contact for more information or tour

### **Jamie Saunders**

415.269.3869  
jsaunders@cresa.com  
BRE# 01417958

### **Janna Luce**

415.309.0067  
jluce@cresa.com  
BRE# 01255526

### **Patrick Hearst**

858.334.5301  
phearst@cresa.com  
BRE# 01994957